


LOC/DME I-CH 111.5 Chan 52	APP CRS 004°	Rwy Ldg 5001 TDZE 343 Apt Elev 343
--	------------------------	---

ILS or LOC RWY 36

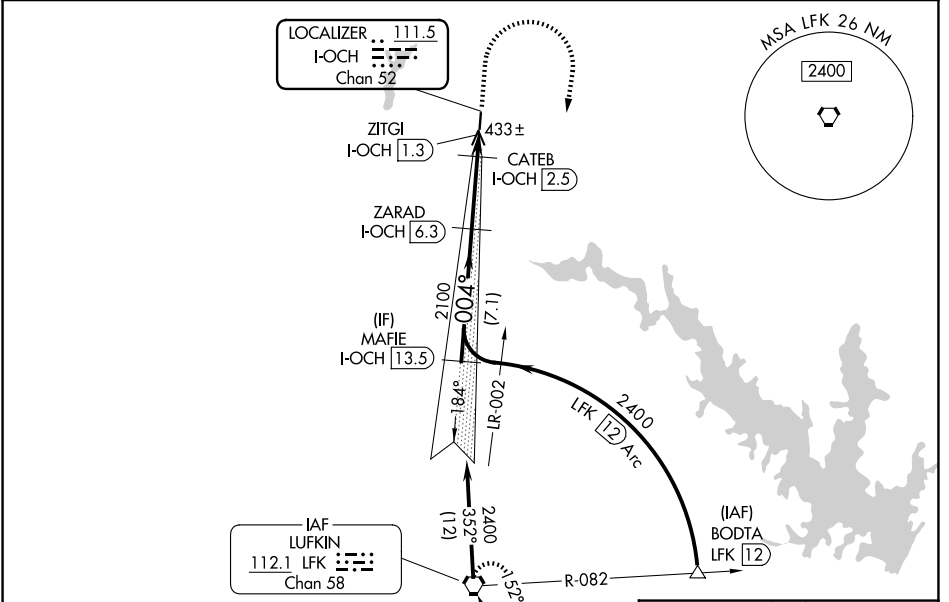
NACOGDOCHES A L MANGHAM JR RGNL (OCH)

DME required.

NA VDP NA when using LFK alimeter setting. Autopilot coupled approach NA below 740. When local alimeter setting not received, use LFK alimeter setting: Increase S-ILS 36 DA to 598 feet; increase all MDAs 60 feet and S-LOC 36 visibility Cat C 1/2 SM, and Circling visibility Cat C 1/4 SM. Localizer unusable inside 0.3 NM from threshold.

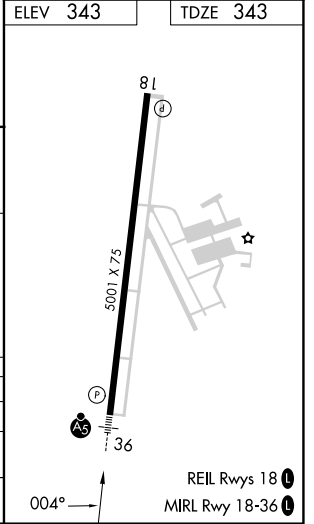
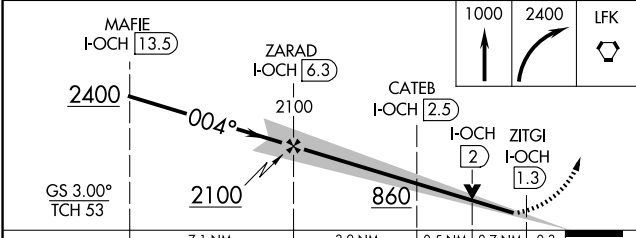
MALSR  MISSED APPROACH: Climb to 1000 then climbing right turn to 2400 direct LFK VORTAC and hold.

AWOS-3PT 135.625	HOUSTON CENTER 125.175 285.575	UNICOM 123.0 (CTAF)
----------------------------	--	-------------------------------



Procedure NA for arrival on LFK VORTAC
airway radials 318 CW 032.

ELEV 343	TDZE 343
----------	----------



CATEGORY	A	B	C	D
S-ILS 36	543-1/2	200 (200-1/2)		NA
S-LOC 36	700-1/2	357 (400-1/2)	700-5/8 357 (400-5/8)	NA
CIRCLING	860-1	517 (600-1)	1080-2 737 (800-2)	NA

SC-5, 14 MAY 2026 to 11 JUN 2026

SC-5, 14 MAY 2026 to 11 JUN 2026