

APP CRS **177°**
 Rwy Ldg **5001**
 TDZE **343**
 Apt Elev **343**

RNAV (GPS) RWY 18

NACOGDOCHES A L MANGHAM JR RGNL (OCH)

RNP APCH-GPS.

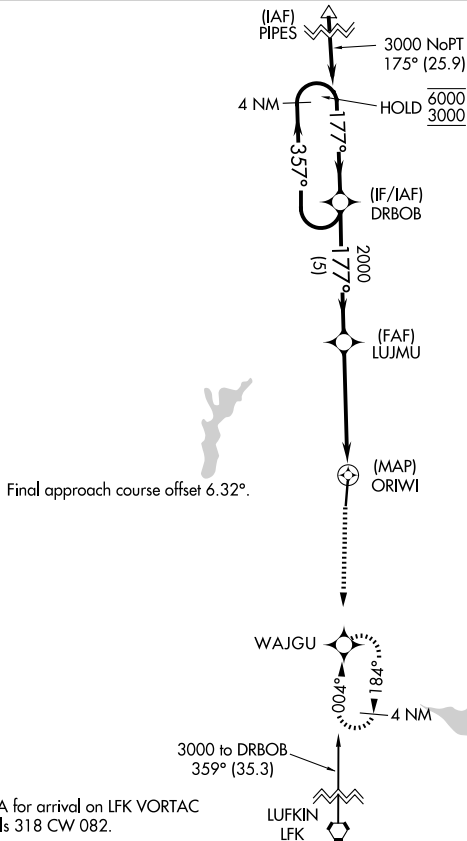
⚠ Rwy 18 helicopter visibility reduction below 1 SM NA. When local altimeter setting not received, use LFK altimeter setting: Increase all MDAs 60 feet and visibility Cat C ¼ SM.

MISSED APPROACH: Climb to 2400 direct WAJGU and hold, continue climb-in-hold.

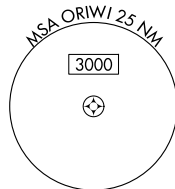
AWOS-3PT
135.625

HOUSTON CENTER
125.175 285.575

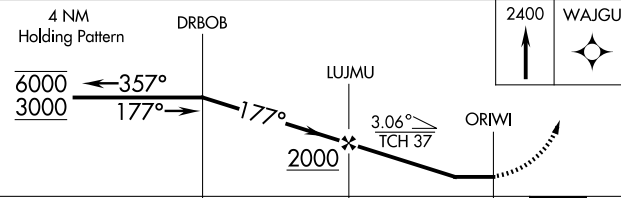
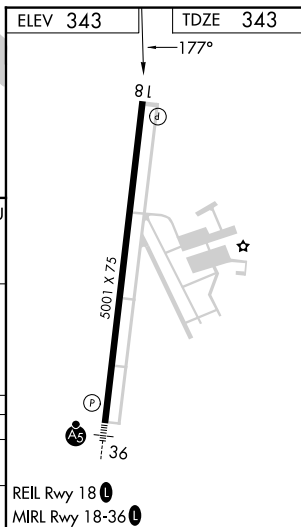
UNICOM
123.0(CTAF) 0



Final approach course offset 6.32°.



Procedure NA for arrival on LFK VORTAC airway radials 318 CW 082.



CATEGORY	A	B	C	D
LNVA MDA	980-1	637 (700-1)	980-1¾ 637 (700-1¾)	NA
CIRCLING	980-1	637 (700-1)	1080-2 737 (800-2)	NA

REIL Rwy 18 **0**
 MRL Rwy 18-36 **0**

RNAV (GPS) RWY 18

SC-5, 14 MAY 2026 to 11 JUN 2026

SC-5, 14 MAY 2026 to 11 JUN 2026