

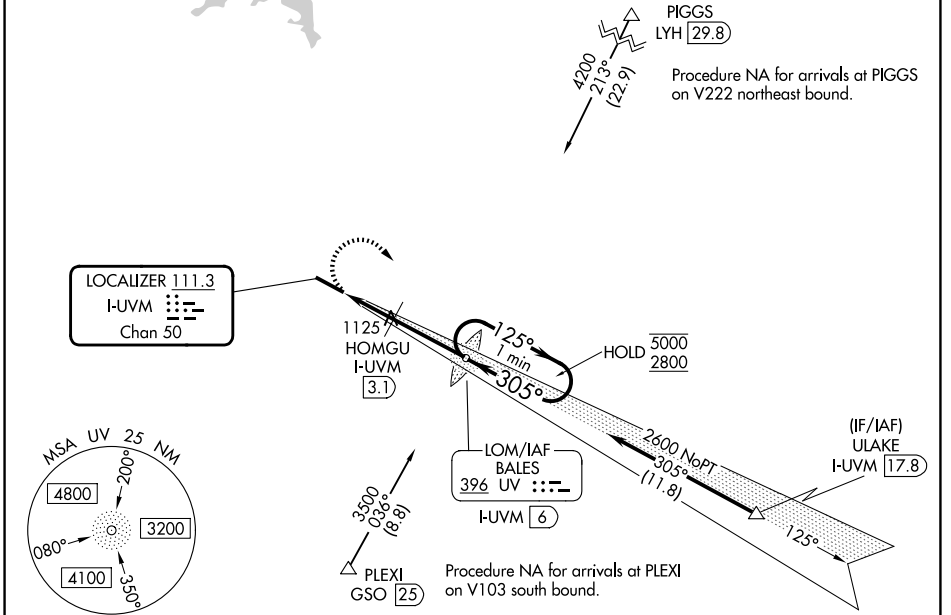
LOC/DME I-UVM 111.3 Chan 50	APP CRS 305°	Rwy Ldg 6077 TDZE 925 Apt Elev 941
---	------------------------	---

LOC RWY 31

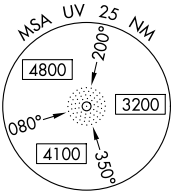
BLUE RIDGE (MTV)

ADF or DME required for procedure entry. ADF required.	ODALS 	MISSED APPROACH: Climbing right turn to 2800 direct BALES LOM/I-UVM 6 DME and hold, continue climb in hold to 2800.
<p>Rwy 31 helicopter visibility reduction below 3/4 SM NA. For inop ALS while using HOMGU fix minimums, increase Cat C/D visibility to 1 1/2 SM.</p> <p>-16°C</p>		

AWOS-3 118.45	GREENSBORO APP CON 124.35 269.225	CLNC DEL 124.85	UNICOM 122.7 (CTAF) 0
-------------------------	---	---------------------------	---------------------------------



LOCALIZER 111.3
I-UVM
Chan 50

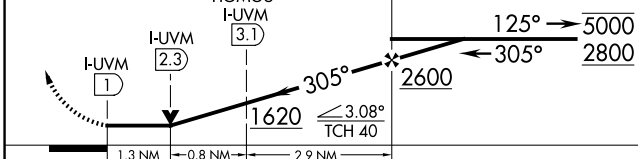


NE-3, 14 MAY 2026 to 11 JUN 2026

NE-3, 14 MAY 2026 to 11 JUN 2026

ELEV 941	TDZE 925
----------	----------

2800 BALES VGSi and descent angles not coincident (VGSi Angle 3.00/TCH 47).
One Minute Holding Pattern
UV LOM I-UVM (6)



CATEGORY	A	B	C	D
S-31	1620-3/4	695 (700-3/4)	1620-1 1/8	695 (700-1 1/8)
CIRCLING	1620-1	679 (700-1)	1620-2 679 (700-2)	1800-2 3/4 859 (900-2 3/4)
HOMGU FIX MINIMUMS				
S-31	1380-3/4	455 (500-3/4)	1380-1 1/8	455 (500-1 1/8)
CIRCLING	1420-1 479 (500-1)	1440-1 499 (500-1)	1540-1 1/2 599 (600-1 1/2)	1800-2 3/4 859 (900-2 3/4)

MRL Rwy 13-31 0
REIL Rwy 13 and 31 0
FAF to MAP 5 NM

Knots	60	90	120	150	180
Min:Sec	5:00	3:20	2:30	2:00	1:40