

WAAS CH 53348 W13A	APP CRS 125°	Rwy Ldg TDZE Apt Elev	6077 948 948
--	------------------------	-----------------------------	---

RNAV (GPS) RWY 13

BLUE RIDGE (MTV)

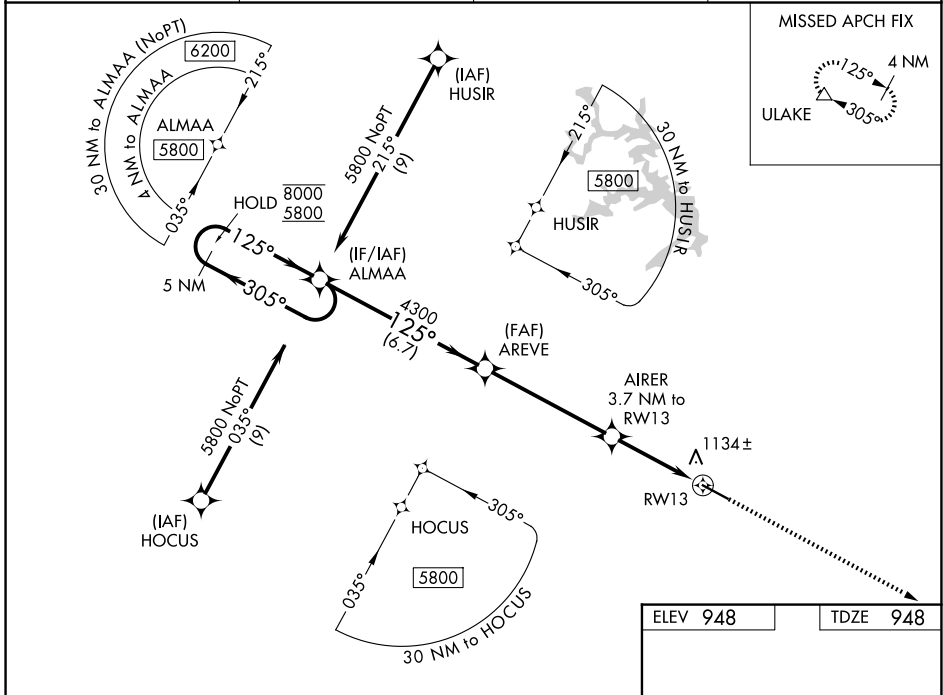
RNP APCH - GPS.

▼ Rwy 13 helicopter visibility reduction below ¾ SM NA. For uncompensated Baro-VNAV systems, LNAV/VNAV NA below -1.6°C or above 45°C.

⚠ -1.6°C

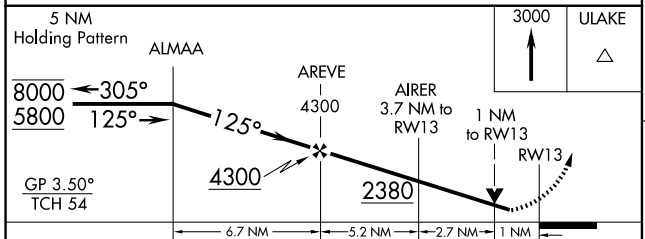
MISSED APPROACH: Climb to 3000 direct ULAKE and hold.

AWOS-3 118.45	GREENSBORO APP CON 124.35 269.225	CINC DEL 124.85	UNICOM 122.7 (CTAF) 0
-------------------------	---	---------------------------	---------------------------------



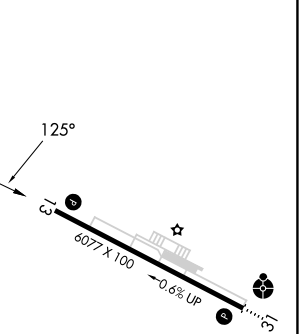
NE-3, 14 MAY 2026 to 11 JUN 2026

NE-3, 14 MAY 2026 to 11 JUN 2026



ELEV 948	TDZE 948
----------	----------

3000	ULAKE			
8000 ← 305°	125° →			
5800	125° →			
GP 3.50°	TCH 54			
4300	2380			
6.7 NM	5.2 NM			
2.7 NM	1 NM			
A	B			
LPV DA	1301-1	353 (400-1)		
LNAV/VNAV DA	1387-1¼	439 (500-1¼)		
LNAV MDA	1400-1	452 (500-1)	1400-1¼	452 (500-1¼)
CIRCLING	1440-1	1480-1	1560-1¾	1820-2¾
	492 (500-1)	532 (600-1)	612 (700-1¾)	872 (900-2¾)



MIRL Rwy 13-31 0
REIL Rwy 13 and 31 0