

| | | | |
|--|------------------------|-----------------------------|---|
| WAAS CH 70716 W24A | APP CRS 240° | Rwy Idg TDZE Apt Elev | 3898 884 887 |
|--|------------------------|-----------------------------|---|

RNAV (GPS) RWY 24

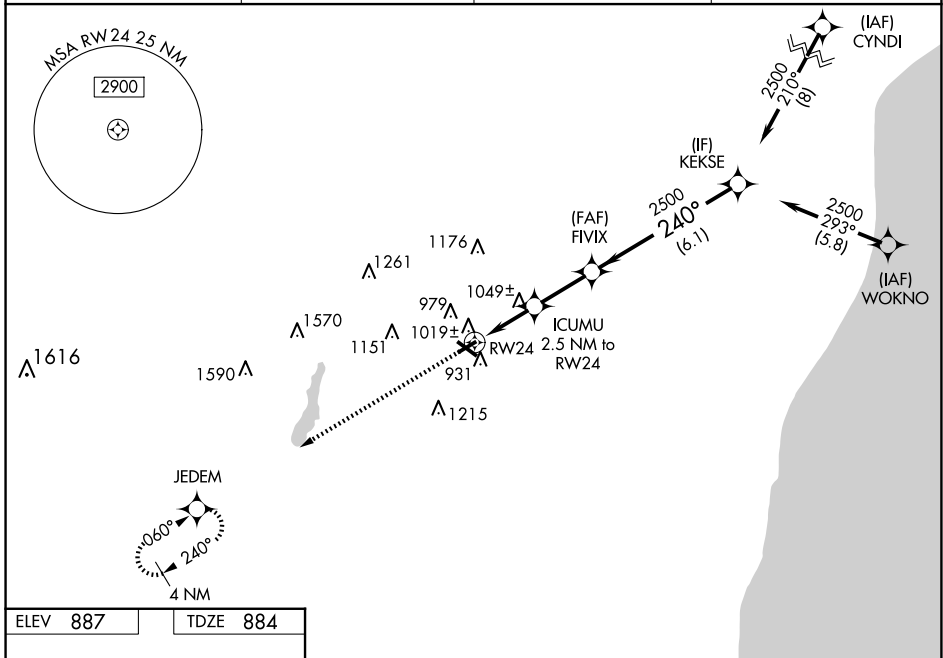
WEST BEND MUNI (E/TB)

RNP APCH - GPS.

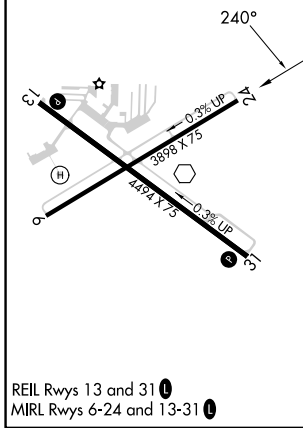
▼ For uncompensated Baro-VNAV systems, LNAV/VNAV NA below -16°C or above 47°C. Rwy 24 helicopter visibility reduction below 3/4 SM NA. Baro-VNAV and VDP NA when using Lawrence J Timmerman altimeter setting. When local altimeter setting not received, use Milwaukee/Lawrence J Timmerman altimeter setting and increase LPV DA to 1260 feet; LNAV/VNAV DA to 1433 feet and all visibility 3/4 SM; increase all MDA 80 feet and LNAV Cat C/D and Circling Cat C/D visibility 1/4 SM.

⚠ MISSED APPROACH: Climb to 3000 direct JEDEM and hold.

| | | | |
|------------------------|--|---------------------------|----------------------------------|
| AWOS-3 120.0 | MILWAUKEE APP CON 125.35 307.0 | CLNC DEL 124.75 | UNICOM 123.05 (CTAF) 0 |
|------------------------|--|---------------------------|----------------------------------|



| | |
|-----------------|-----------------|
| ELEV 887 | TDZE 884 |
|-----------------|-----------------|



| | | | | |
|--------------|----------------------------|-----------------------|-----------------------|-------------------------------|
| 3000 | JEDEM | Procedure Turn NA | | |
| * LNAV only | ICUMU 2.5 NM to RWY24 | FVIX | | |
| 240° | * 1.2 NM to RWY24 | 2500 | | |
| 240° | * 1720 | 2500 | | |
| 1.2 NM | 1.3 NM | 2.4 NM | | |
| 6.1 NM | | | | |
| GP 3.00° | TCH 45 | | | |
| CATEGORY | A | B | C | D |
| LPV DA | 1196-1 312 (400-1) | | | |
| LNAV/VNAV DA | 1369-1 3/4 485 (500-1 3/4) | | | |
| LNAV MDA | 1300-1 | 416 (500-1) | 1300-1 1/4 | 416 (500-1 1/4) |
| CIRCLING | 1420-1 533 (600-1) | 1520-1 633 (700-1) | 1560-2 673 (700-2) | 1560-2 1/4 673 (700-2 1/4) |

EC-3, 14 MAY 2026 to 11 JUN 2026

EC-3, 14 MAY 2026 to 11 JUN 2026