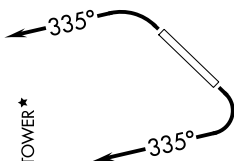


SW-4, 14 MAY 2026 to 11 JUN 2026

**TOP ALTITUDE:
ASSIGNED BY ATC**

PHOENIX DEP CON
120.7 239.0
ATIS
118.6
CLNC DEL
124.8
GND CON
121.6
SCOTTSDALE TOWER*
119.9



DEPARTURE ROUTE DESCRIPTION

TAKEOFF RUNWAY 3: Climbing left turn heading 335° or as assigned by ATC, thence. . . .

TAKEOFF RUNWAY 21: Climbing right turn heading 335° or as assigned by ATC. Thence. . . .

. . . on RADAR vectors to ECLPS, then on track 111° to KATMN, then on (transition). Maintain ATC assigned altitude, expect filed altitude 3 minutes after departure.

PHASE TRANSITION [KATMN6.PHASE]

TAKEOFF MINIMUMS

Rwy 3: Standard with minimum climb of 445' per NM to 4600.
Rwy 21: Standard with minimum climb of 300' per NM to 4600.

NOTE: RNAV 1.

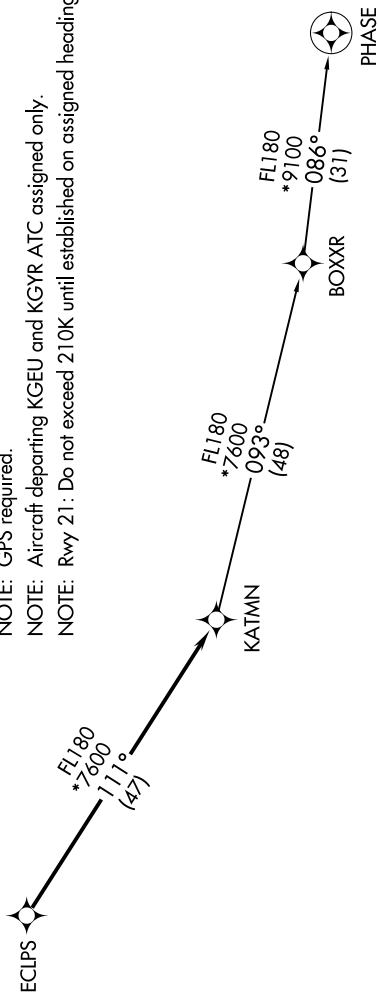
NOTE: Turbojets and turboprops only.

NOTE: RADAR required.

NOTE: GPS required.

NOTE: Aircraft departing KGEU and KGYR ATC assigned only.

NOTE: Rwy 21 : Do not exceed 210K until established on assigned heading.



NOTE: Chart not to scale.

SW-4, 14 MAY 2026 to 11 JUN 2026