

APP CRS	Rwy Ldg	7669
212°	TDZE	1507
	Apt Elev	1510

RNAV (RNP) RWY 21

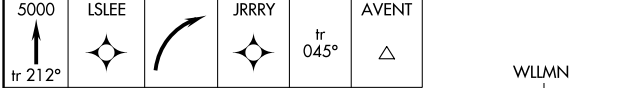
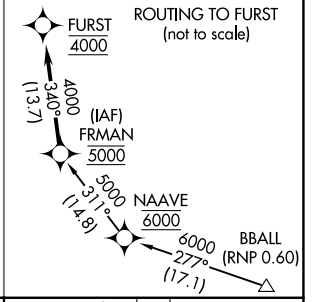
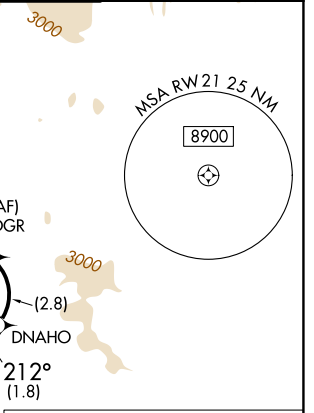
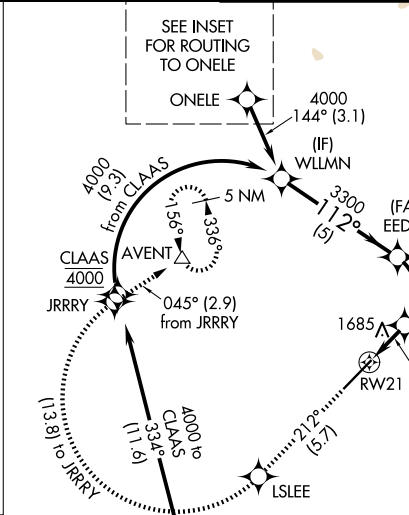
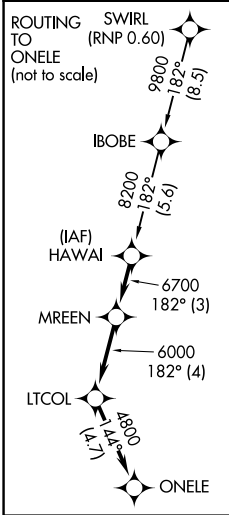
SCOTTSDALE (SDL)

RNP AR APCH - GPS, RF, min RNP 0.60. Authorization required.

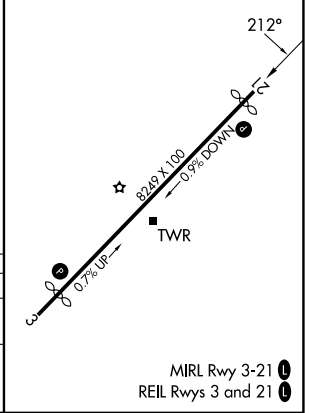
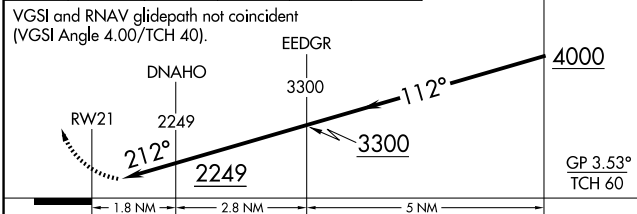
▼ For uncompensated Baro-VNAV systems, procedure NA below 1°C or above 54°C. When local altimeter setting not received procedure NA.

MISSED APPROACH: Climb to 5000 on track 212° to LSLEE and right turn to JRRRY and on track 045° to AVENT and hold.

ATIS 118.6	PHOENIX APP CON 120.7 239.0	SCOTTSDALE TOWER* 119.9 (CTAF) 0	GND CON 121.6
----------------------	---------------------------------------	--	-------------------------



ELEV 1510	D TDZE 1507
-----------	--------------------



CATEGORY	A	B	C	D
RNP 0.16 DA	1993-1 $\frac{3}{8}$	486 (500-1 $\frac{3}{8}$)		NA

AUTHORIZATION REQUIRED

MIRL Rwy 3-21 0
 REIL Rws 3 and 21 0

SW-4, 14 MAY 2026 to 11 JUN 2026

SW-4, 14 MAY 2026 to 11 JUN 2026