

VORTAC PXR <b>115.6</b> Chan <b>103</b>	APP CRS <b>003°</b>	Rwy Ldg TDZE Apt Elev <b>1510</b>	<b>N/A</b> <b>N/A</b>
---	------------------------	--	--------------------------

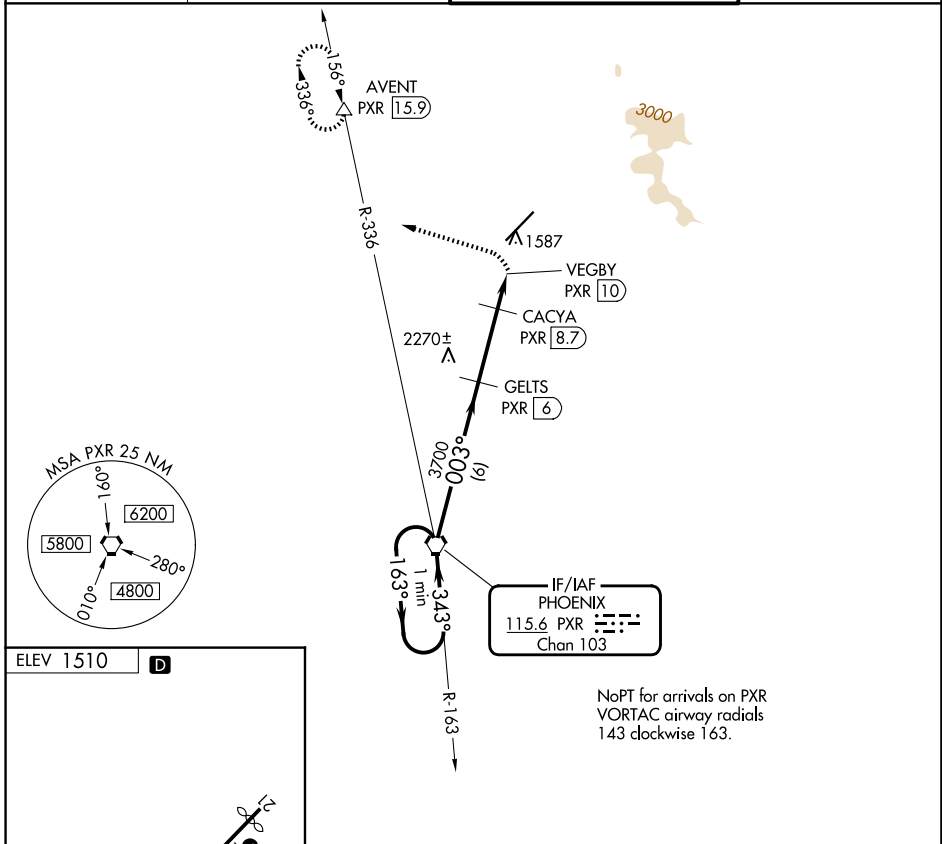
# VOR/DME-A

SCOTTSDALE (SDL)

**⚠** When local altimeter setting not received, use Phoenix Sky Harbor altimeter setting and increase all MDA 100 feet and increase visibility Cat C ¼ SM.

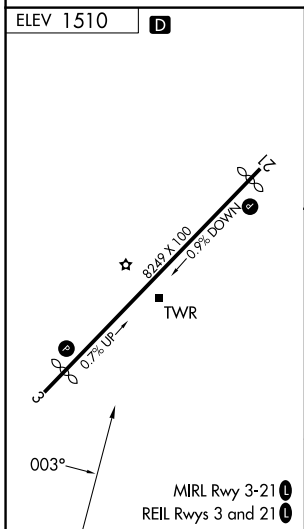
**MISSED APPROACH:** Climbing left turn to 7000 on heading 280° and on PXR VORTAC R-336 to AVENT/PXR 15.9 DME and hold, continue climb-in-hold to 7000.

ATIS <b>118.6</b>	PHOENIX APP CON <b>120.7 239.0</b>	SCOTTSDALE TOWER* <b>119.9 (CTAF) 0</b>	GND CON <b>121.6</b>
----------------------	---------------------------------------	--	-------------------------



IF/IAF  
PHOENIX  
115.6 PXR  
Chan 103

NoPT for arrivals on PXR VORTAC  
airway radials 143 clockwise 163.



One Minute Holding Pattern	PXR VORTAC		7000	PXR R-336	AVENT
	GELTS PXR 6		hdg 280°		△
4200 ← 163°		→ 343°	003°	CACYA PXR 8.7	VEGBY PXR 10
		3700	2700		
		6 NM		2.7 NM 1.3 NM	
CATEGORY	A	B	C	D	
CIRCLING	2380-1½	870 (900-1½)	2460-2¾ 950 (1000-2¾)	3300-3 1790 (1800-3)	

SW-4, 14 MAY 2026 to 11 JUN 2026

SW-4, 14 MAY 2026 to 11 JUN 2026