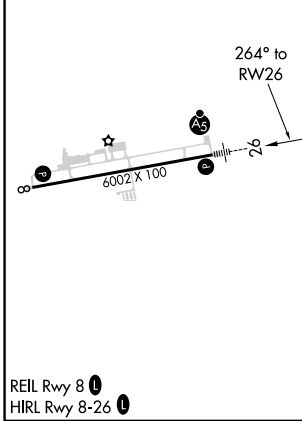
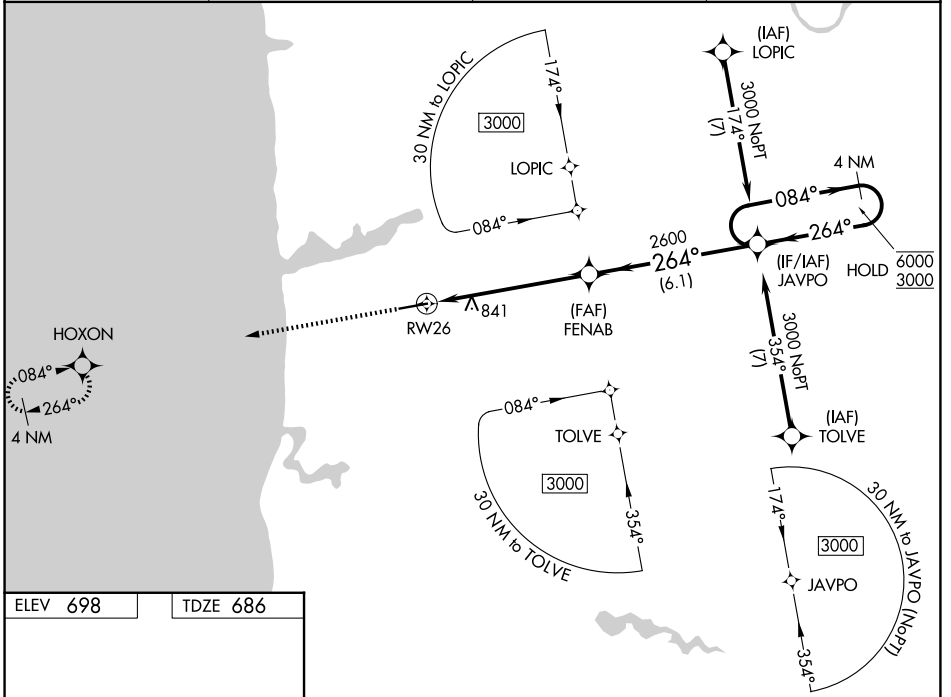


| | | | |
|--|------------------------|---|-------------|
| WAAS CH 53402 W26A | APP CRS 264° | Rwy Ldg TDZE 686 Apt Elev 698 | 6002 |
|--|------------------------|---|-------------|

RNAV (GPS) RWY 26

WEST MICHIGAN RGNL (BIV)

| | | | |
|--|---|---------------------------|---|
| RNP APCH. | | MALSR | MISSED APPROACH: Climb to 2700 direct HOXON and hold. |
| <p>▽ For uncompensated Baro-VNAV systems, LNAV/VNAV NA below -16°C or above 54°C. ▲ For inoperative ALS, increase LNAV/VNAV all Cats visibility to 1 SM; increase LNAV Cat C visibility to 1 1/2 SM.</p> | | | |
| ASOS 119.025 | GREAT LAKES APP CON* 133.825 290.35 | CLNC DEL 123.95 | UNICOM 123.05 (CTAF) |



| | | | | |
|--------------|-----------------------|-----------------------|-------------------------------|-----------------|
| 2700 | HOXON | *LNAV only | JAVPO 4 NM Holding Pattern | |
| | | | FENAB 2600 | JAVPO 6000/3000 |
| | | *1.2 NM to RW26 | 2600 | GP 3.00° TCH 32 |
| | | 1.2 | 4.7 NM | 6.1 NM |
| CATEGORY | A | B | C | D |
| LPV DA | 886-1/2 | 200 (200-1/2) | | NA |
| LNAV/VNAV DA | 1040-5/8 | 354 (400-5/8) | | NA |
| LNAV MDA | 1100-1/2 | 414 (500-1/2) | 1100-3/4 414 (500-3/4) | NA |
| CIRCLING | 1200-1 502 (600-1) | 1240-1 542 (600-1) | 1240-1 1/2 542 (600-1 1/2) | NA |

EC-1, 14 MAY 2026 to 11 JUN 2026

EC-1, 14 MAY 2026 to 11 JUN 2026