

WAAS CH <b>49222</b> <b>W08A</b>	APP CRS <b>084°</b>	Rwy Ldg TDZE Apt Elev	<b>6002</b> <b>698</b> <b>698</b>
--	------------------------	-----------------------------	---

# RNAV (GPS) RWY 8

WEST MICHIGAN RGNL (BIV)

RNP APCH - GPS.

**▼** For uncompensated Baro-VNAV systems, LNAV/VNAV NA below -16°C or above 54°C.  
**▲** When local altimeter setting not received, use Muskegon altimeter setting: increase LPV DA to 1018 feet, increase LNAV/VNAV DA to 1160 feet, and all visibilities ¼ SM, increase all MDAs 80 feet, and visibility LNAV Cat C/D ¼ SM and Circling Cat C/D ¼ SM. Baro-VNAV and VDP NA when using Muskegon altimeter setting.

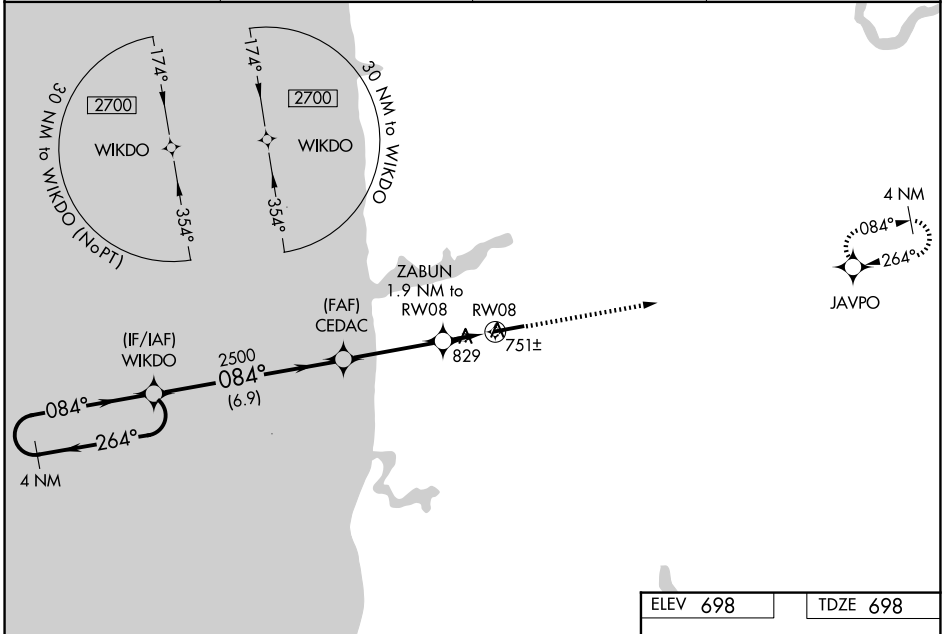
**MISSED APPROACH:**  
Climb to 3000 direct JAVPO and hold.

ASOS  
**119.025**

GREAT LAKES APP CON\*  
**133.825 290.35**

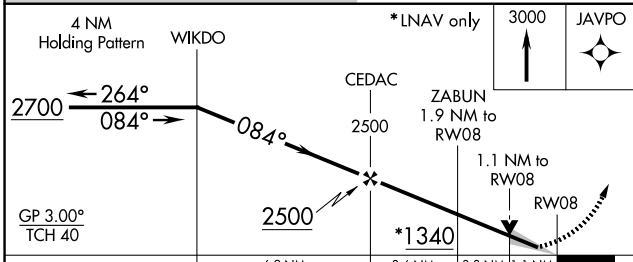
CLNC DEL  
**123.95**

UNICOM  
**123.05 (CTAF) ①**



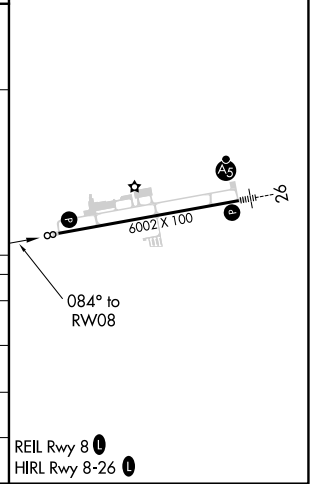
EC-1, 14 MAY 2026 to 11 JUN 2026

EC-1, 14 MAY 2026 to 11 JUN 2026



ELEV 698	TDZE 698
----------	----------

CATEGORY	A	B	C	D
LPV DA	948-7/8		250 (300-7/8)	
LNAV/VNAV DA	1080-1 1/8		382 (400-1 1/8)	
LNAV MDA	1080-1	382 (400-1)	1080-1 1/8	382 (400-1 1/8)
CIRCLING	1200-1 502 (600-1)	1240-1 542 (600-1)	1240-1 1/2 542 (600-1 1/2)	1320-2 622 (700-2)



REIL Rwy 8 ①  
HIRL Rwy 8-26 ①