

APP CRS	Rwy Ldg	<b>4002</b>
<b>021°</b>	TDZE	<b>765</b>
	Apt Elev	<b>765</b>

# RNAV (GPS) RWY 2

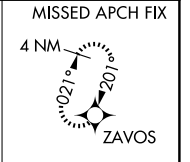
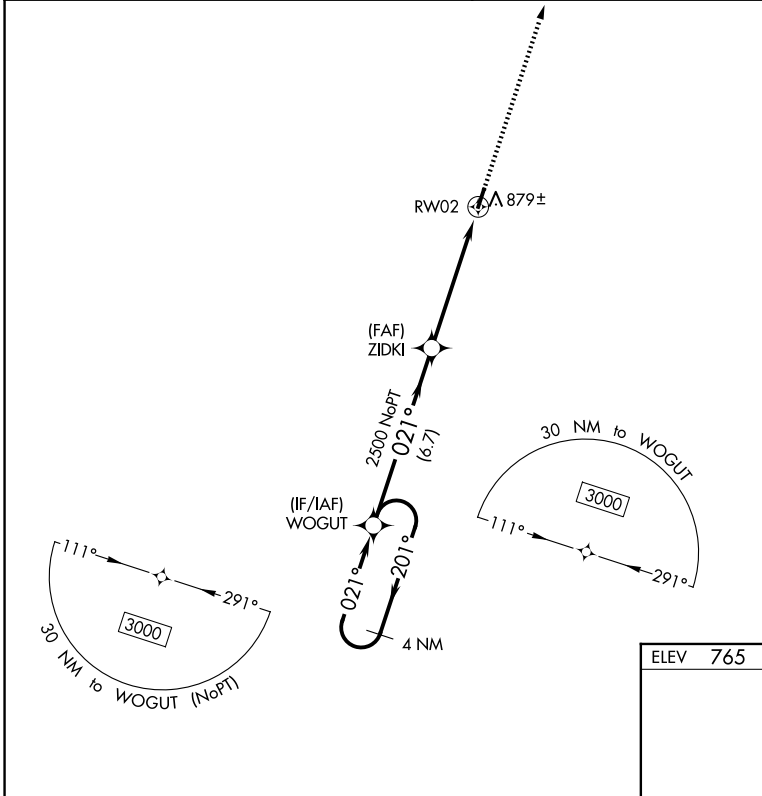
CENTERVILLE MUNI (GHM)

**⚠ NA** Obtain local altimeter setting on CTAF, when not received, use Columbia/Mount Pleasant altimeter setting and increase all MDA 80 feet. Increase LNAV Cats C and D visibility  $\frac{3}{8}$  mile and Circling Cat D  $\frac{1}{4}$  mile. DME/DME RNP-0.3 NA. Procedure NA at night. Helicopter visibility reduction below 1 SM NA.

**MISSED APPROACH:**  
Climb to 3000 direct ZAVOS and hold.

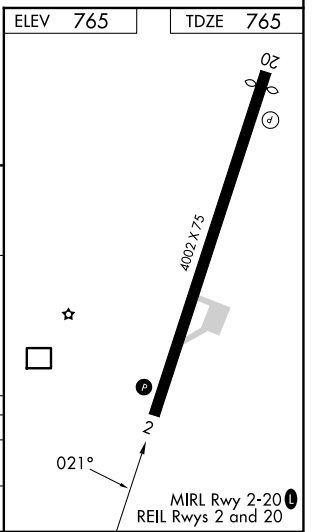
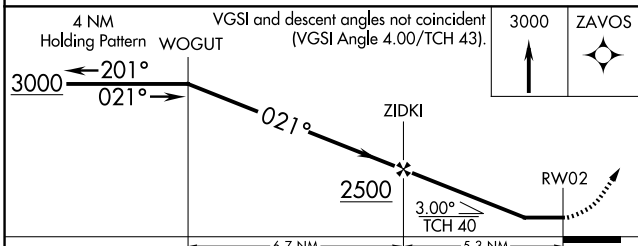
NASHVILLE APP CON  
**119.35 372.0**

UNICOM  
**122.8 (CTAF) 0**



SE-1, 14 MAY 2026 to 11 JUN 2026

SE-1, 14 MAY 2026 to 11 JUN 2026



CATEGORY	A	B	C	D
LNAV MDA	1140-1 375 (400-1)			
CIRCLING	1260-1	495 (500-1)	1280-1½ 515 (600-1½)	1520-2½ 755 (800-2½)