

WAAS CH 45836 W22A	APP CRS 223°	Rwy Ldg TDZE Apt Elev	4505 90 92
--	------------------------	-----------------------------	---------------------------------------

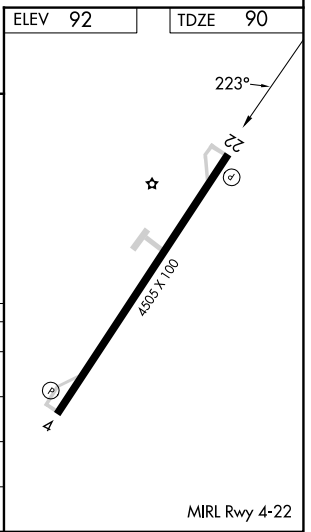
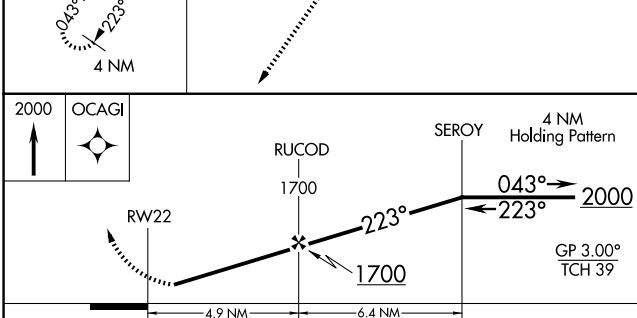
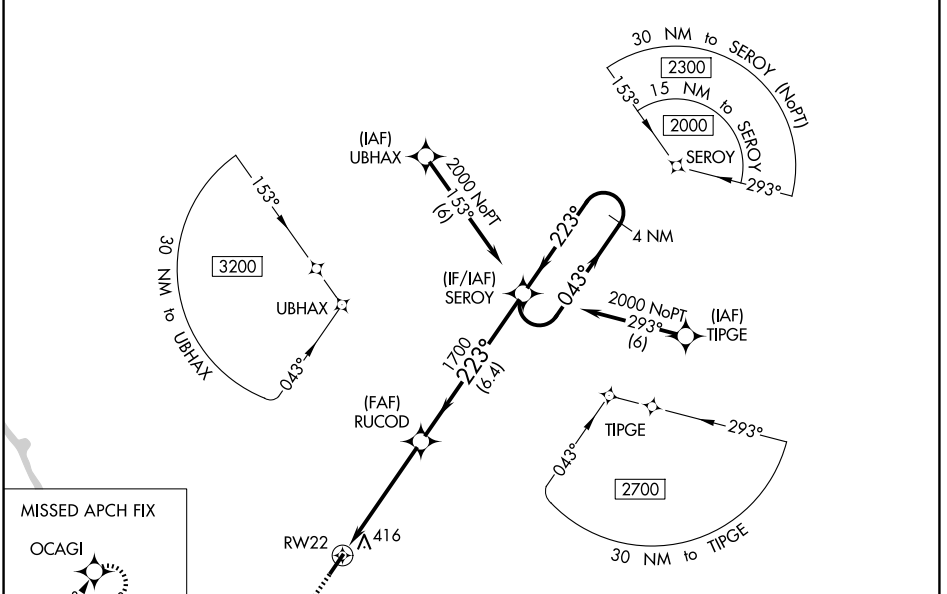
RNAV (GPS) RWY 22

MARION COUNTY (MAO)

⚠ Baro-VNAV NA when using Florence altimeter setting. For uncompensated Baro-VNAV systems, LNAV/VNAV NA below -8°C (18°F) or above 54°C (130°F). DME/DME RNP-0.3 NA. Helicopter visibility reduction below ¼ SM NA. When local altimeter setting not received, use Florence altimeter setting and increase all DA 53 feet and all visibilities ¼ mile, increase all MDA 60 feet and all Cat C/D visibilities ¼ mile.

⚠ MISSED APPROACH: Climb to 2000 direct OCAGI and hold.

AWOS-3PT 119.875	FLORENCE APP CON * 135.25 316.15	UNICOM 122.8 (CTAF)
----------------------------	--	-------------------------------



CATEGORY	A	B	C	D
LPV DA		396-1	306 (400-1)	
LNAV/VNAV DA		577-1½	487 (500-1½)	
LNAV MDA	680-1	590 (600-1)	680-¾	590 (600-¾)
CIRCLING	720-1	628 (700-1)	720-¾ 628 (700-¾)	960-¾ 868 (900-¾)

SE-2, 14 MAY 2026 to 11 JUN 2026

SE-2, 14 MAY 2026 to 11 JUN 2026

MIRL Rwy 4-22