

|  |                        |   |
|--|------------------------|---|
| WAAS<br>CH <b>82215</b><br><b>W28A</b> | APP CRS<br><b>277°</b> | Rwy Ldg <b>4972</b><br>TDZE <b>1134</b><br>Apt Elev <b>1136</b> |
|--|------------------------|---|

# RNAV (GPS) RWY 28

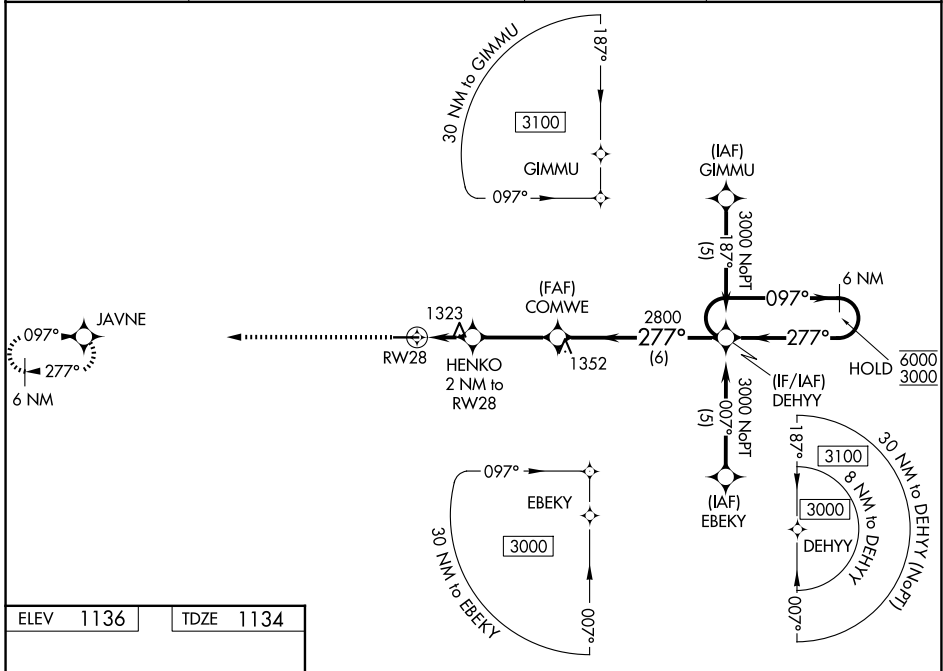
WAYNE COUNTY (BJJ)

RNP APCH - GPS.

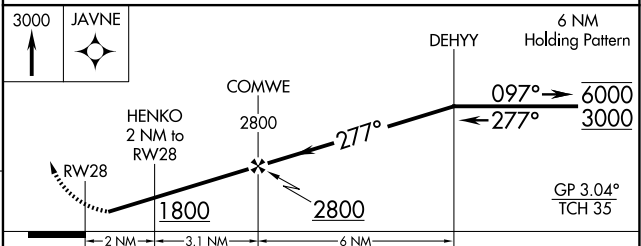
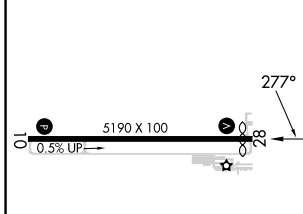
▼ Baro-VNAV NA when using CAK altimeter setting. For uncompensated Baro-VNAV systems, LNAV/VNAV NA below -19°C or above 54°C. Rwy 28 helicopter visibility reduction below 1 SM NA. When local altimeter setting not received, use CAK altimeter setting and increase LPV DA to 1458 feet; increase LNAV/VNAV DA to 1649 feet; increase all MDAs 60 feet; and Circling visibility Cat C/D ¼ SM.

MISSED APPROACH:  
Climb to 3000 direct JAVNE and hold.

|                        |   |                           |                                   |
|------------------------|---|---------------------------|-----------------------------------|
| ASOS<br><b>118.075</b> | CLEVELAND APP CON *<br><b>125.5 371.875</b> | CLNC DEL<br><b>121.75</b> | UNICOM<br><b>122.975 (CTAF) ①</b> |
|------------------------|---|---------------------------|-----------------------------------|



|           |           |
|-----------|-----------|
| ELEV 1136 | TDZE 1134 |
|-----------|-----------|



| CATEGORY     | A                     | B                     | C                       | D                       |
|--------------|-----------------------|-----------------------|-------------------------|-------------------------|
| LPV DA       | 1398-1                |                       | 264 (300-1)             |                         |
| LNAV/VNAV DA | 1580-1½               |                       | 446 (500-1½)            |                         |
| LNAV MDA     | 1580-1                | 446 (500-1)           | 1580-1½                 | 446 (500-1½)            |
| CIRCLING     | 1600-1<br>464 (500-1) | 1700-1<br>564 (600-1) | 1800-1¾<br>664 (700-1¾) | 1840-2¼<br>704 (800-2¼) |

REIL Rwy 10 and 28 ①  
HIRL Rwy 10-28 ①

EC-2, 14 MAY 2026 to 11 JUN 2026

EC-2, 14 MAY 2026 to 11 JUN 2026