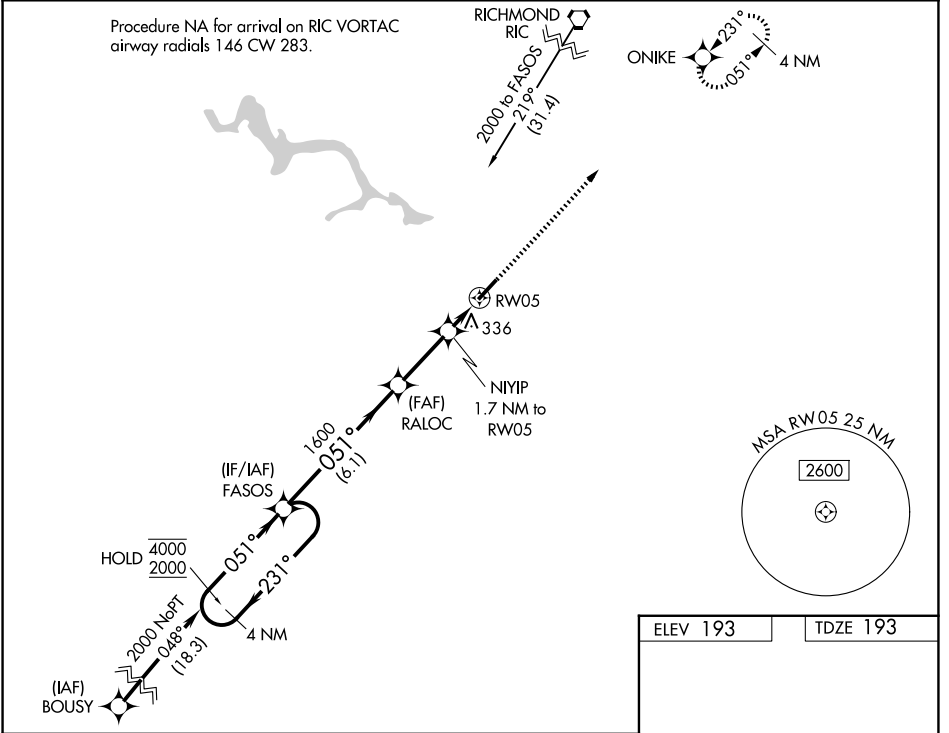


WAAS CH 70705 W05A	APP CRS 051°	Rwy Ldg TDZE Apt Elev	5002 193 193
--	------------------------	-----------------------------	---

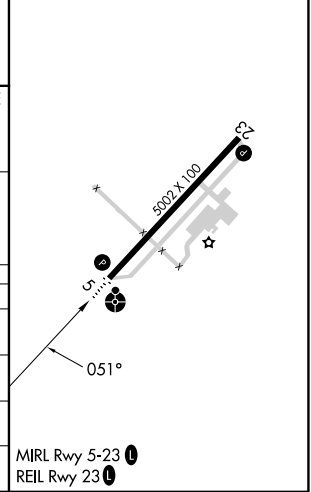
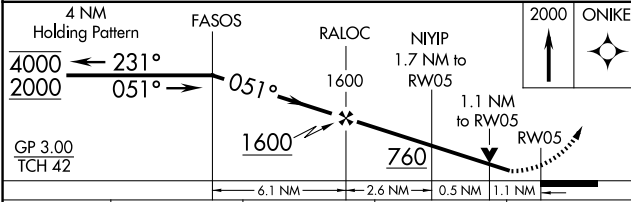
RNAV (GPS) RWY 5
TRI CITIES EXEC/DINWIDDIE COUNTY (PTB)

RNP APCH - GPS.	ODALS	MISSED APPROACH: Climb to 2000 direct ONIKE and hold.
<p>▼ Inop table does not apply to LPV all Cats, LNAV/VNAV all Cats and LNAV Cat A and B. ▲ Rwy 5 helicopter visibility reduction below 3/4 SM NA. For uncompensated Baro-VNAV systems, LNAV/VNAV NA below -15°C or above 54°C.</p>		

AWOS-3 133.325	POTOMAC APP CON 126.75 307.2	GCO 135.075	UNICOM 122.7 (CTAF) 0
--------------------------	--	-----------------------	---------------------------------



ELEV 193	TDZE 193
----------	----------



CATEGORY	A	B	C	D
LPV DA	511-1	318 (400-1)		NA
LNAV/VNAV DA	597-1	404 (500-1)		NA
LNAV MDA	600-1	407 (500-1)		NA
CIRCLING	680-1	487 (500-1)	760-1½ 567 (600-1½)	NA

NE-3, 14 MAY 2026 to 11 JUN 2026

NE-3, 14 MAY 2026 to 11 JUN 2026