

BLUFFTON, OHIO

AL-5665 (FAA)

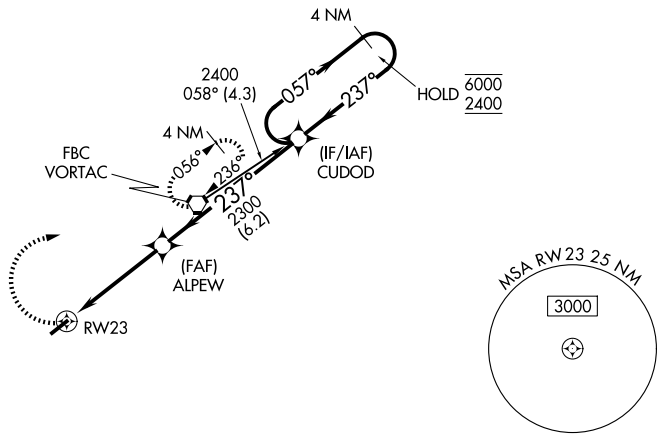
26078

APP CRS <b>237°</b>	Rwy Ldg TDZE Apt Elev	<b>4126</b> <b>850</b> <b>851</b>
------------------------	-----------------------------	---

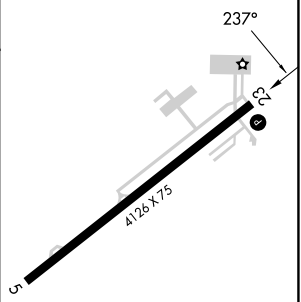
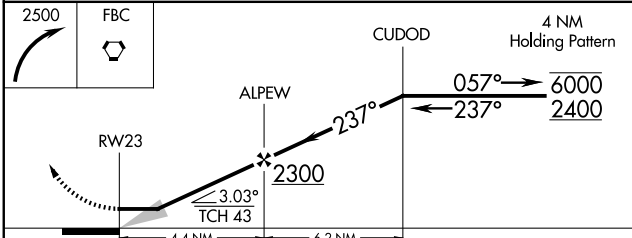
# RNAV (GPS) RWY 23

BLUFFTON (5G7)

RNP APCH.	Use Findlay altimeter setting; when not received use Lima altimeter setting and increase all MDA 20 feet and Circling Cat D visibility ¼ SM.	MISSED APPROACH: Climbing right turn to 2500 direct FBC VORTAC and hold.
FDY ASOS <b>132.85</b>	TOLEDO APP CON <b>120.8 317.55</b>	UNICOM <b>122.8 (CTAF)</b>



ELEV 851	TDZE 850
----------	----------



CATEGORY	A	B	C	D
LNVA MDA	1340-1	490 (500-1)	1340-1 1/8 490 (500-1 3/8)	1340-1 1/2 490 (500-1 1/2)
CIRCLING	1360-1 509 (600-1)	1520-1 669 (700-1)	1520-1 3/4 669 (700-1 3/4)	1520-2 669 (700-2)

REIL Rwy 5 and 23  
MIRL Rwy 5-23

EC-2, 14 MAY 2026 to 11 JUN 2026

EC-2, 14 MAY 2026 to 11 JUN 2026

BLUFFTON, OHIO  
Orig-B 26MAR20

40°53'N-83°52'W

# BLUFFTON (5G7) RNAV (GPS) RWY 23