

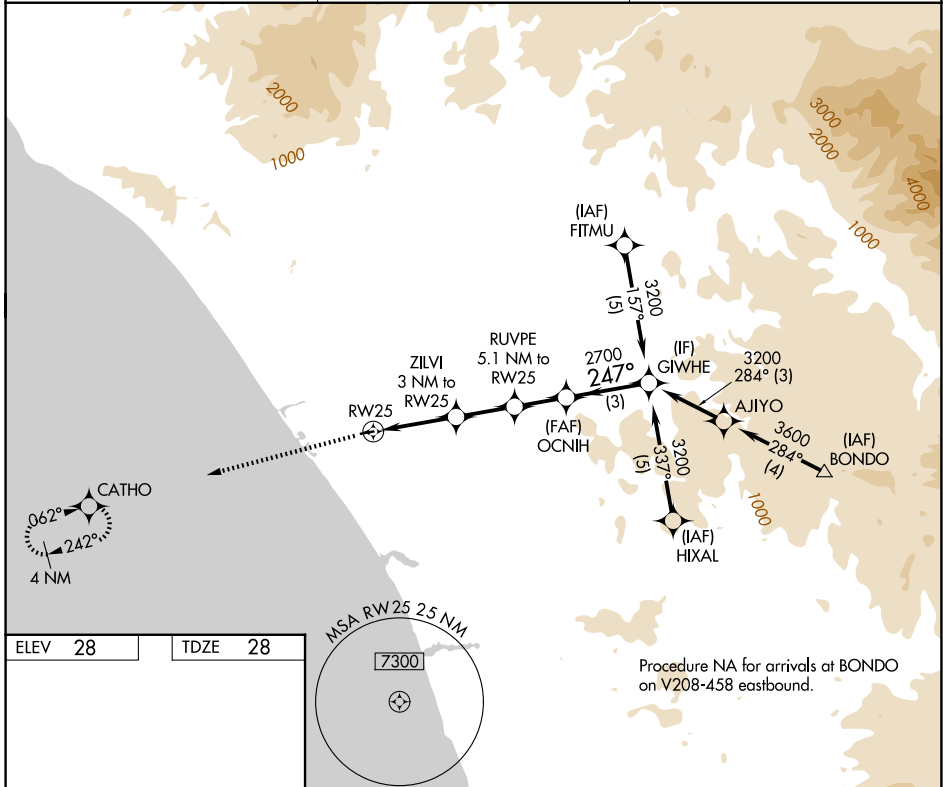
APP CRS <b>247°</b>	Rwy Ldg <b>2712</b>
	TDZE <b>28</b>
	Apt Elev <b>28</b>

# RNAV (GPS) RWY 25

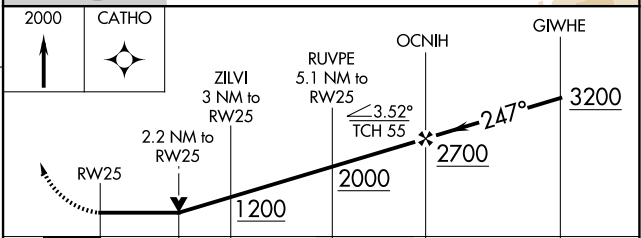
BOB MAXWELL MEML AIRFIELD (OKB)

RNP APCH-GPS.	MISSED APPROACH: Climb to 2000 direct CATHO and hold.
<p>▼ Circling Rwy 7 NA at night.</p> <p>▲ Rwy 25 helicopter visibility reduction below ¾ SM NA.</p>	

ASOS <b>127.8</b>	SOCAL APP CON <b>127.3 323.0</b>	UNICOM <b>122.725 (CTAF) 0</b>
----------------------	-------------------------------------	-----------------------------------



ELEV 28	TDZE 28
<p>MIRL Rwy 7-25 0</p> <p>REIL Rwy 25</p>	



CATEGORY	A	B	C	D
LNAV MDA	920-1¼	892 (900-1¼)	NA	
CIRCLING	920-1¼	892 (900-1¼)	NA	

SW-3, 14 MAY 2026 to 11 JUN 2026

SW-3, 14 MAY 2026 to 11 JUN 2026