

VORTAC OCN <b>115.3</b> Chan <b>100</b>	APP CRS <b>096°</b>	Rwy Ldg TDZE Apt Elev <b>N/A</b> <b>28</b>
---	------------------------	---

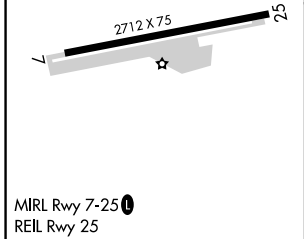
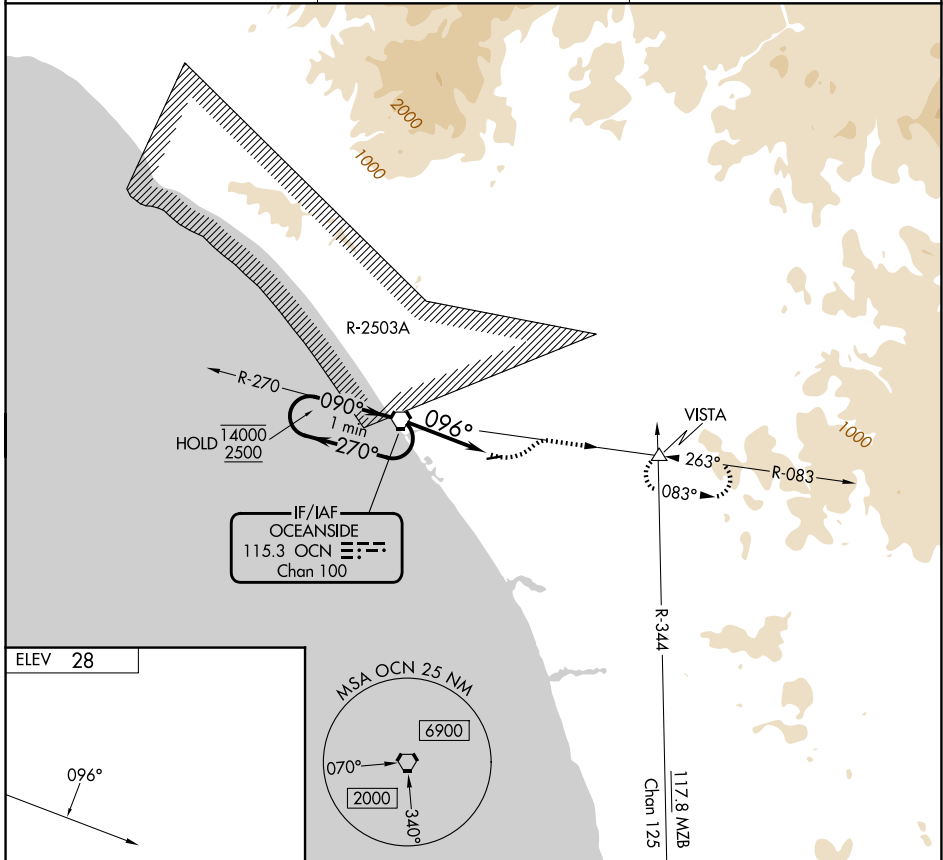
**VOR-A**

BOB MAXWELL MEML AIRFIELD (OKB)

**⚠** Rwy 7 helicopter visibility reduction below 1 SM NA. Circling Rwy 7 NA at night. When local altimeter setting not received, use CRQ altimeter setting and increase all MDAs 60 feet.

**⚠** MISSED APPROACH: Climbing left turn to 5600 on heading 030° and on OCN VORTAC R-083 to VISTA INT and hold, continue climb-in-hold to 5600.

ASOS <b>127.8</b>	SOCAL APP CON <b>127.3 323.0</b>	UNICOM <b>122.725 (CTAF) 0</b>
----------------------	-------------------------------------	-----------------------------------



ELEV <b>28</b>	OCN VORTAC	5600 hdg 030°	OCN R-083	VISTA △
MIRL Rwy 7-25 0				
REIL Rwy 25				

FAF to MAP 3.4 NM					
Knots	60	90	120	150	180
Min:Sec	3:24	2:16	1:42	1:21	1:08
CATEGORY	A	B	C	D	
CIRCLING	980-1¼ 952 (1000-1¼)	980-1½ 952 (1000-1½)	NA		

**VOR-A**

SW-3, 14 MAY 2026 to 11 JUN 2026

SW-3, 14 MAY 2026 to 11 JUN 2026