

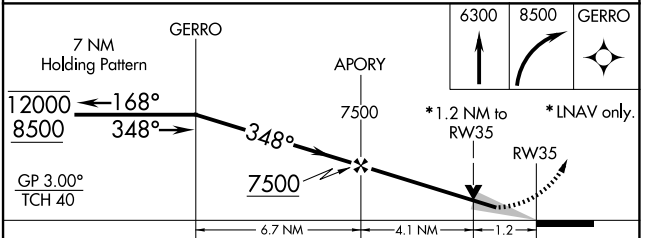
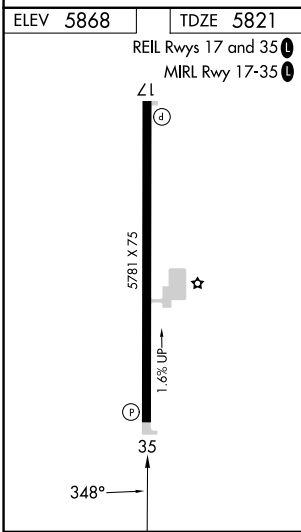
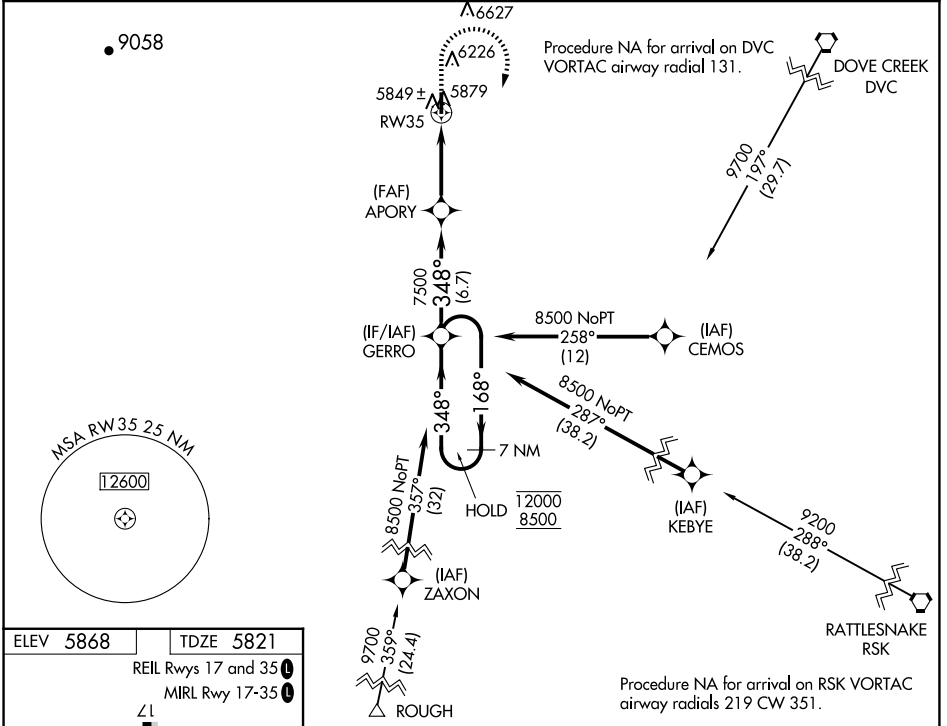
WAAS CH 63024 W35A	APP CRS 348°	Rwy Idg TDZE Apt Elev	5781 5821 5868
--	------------------------	-----------------------------	---

RNAV (GPS) RWY 35

BLANDING MUNI (BDG)

RNP APCH.	MISSED APPROACH: (Do not exceed 165K until GERRO) Climb to 6300 then climbing right turn to 8500 direct GERRO and hold.
<p>▼ For uncompensated Baro-VNAV systems, LNAV/VNAV NA below -26°C or above 54°C.</p> <p>▲</p>	

AWOS-3PT 127.75	DENVER CENTER 127.55 354.05	UNICOM 122.8 (CTAF) 0
---------------------------	---------------------------------------	---------------------------------



CATEGORY	A	B	C	D
LPV DA		6071-1	250 (300-1)	NA
LNAV/VNAV DA		6077-1	256 (300-1)	NA
LNAV MDA	6200-1	379 (400-1)	6200-1 ¹ / ₄ 379 (400-1 ¹ / ₄)	NA
CIRCLING	6440-1 572 (600-1)	6540-1 672 (700-1)	6760-2 ³ / ₄ 892 (900-2 ³ / ₄)	NA

SW-4, 14 MAY 2026 to 11 JUN 2026

SW-4, 14 MAY 2026 to 11 JUN 2026