

WAAS CH 99345 W14A	APP CRS 139°	Rwy Ldg TDZE Apt Elev	5500 1013 1013
----------------------------------------	------------------------	-----------------------------	-------------------------------------------

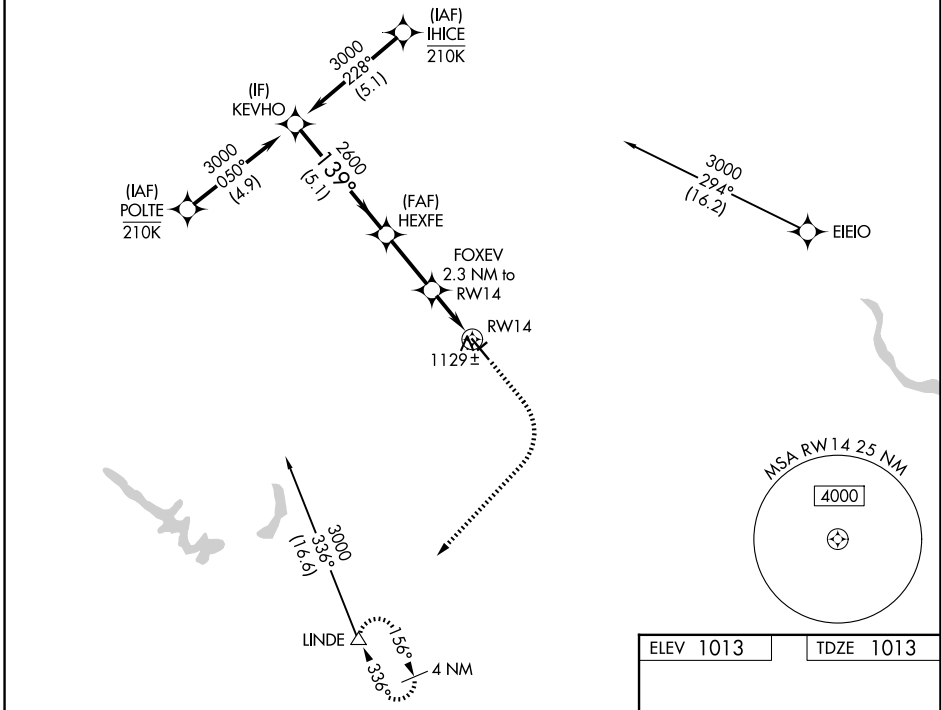
RNAV (GPS) RWY 14

PERRY MUNI (PRO)

RNP APCH - GPS.
 ⚠ Circling NA to Rwys 4 and 22. For uncompensated Baro-VNAV systems, LNAV/VNAV NA below -17°C or above 54°C.

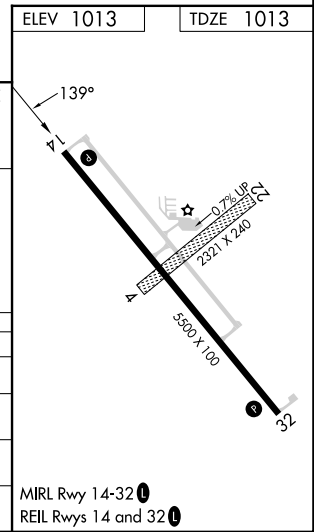
MISSED APPROACH: Climb to 1500 then climbing right turn to 3500 direct LINDE and hold.

AWOS-3 118.0	DES MOINES APP CON 123.9 360.7	UNICOM 122.8 (CTAF) 0
------------------------	------------------------------------------	---------------------------------



VGSI and RNAV glidepath not coincident (VGSI Angle 3.00/TCH 34).

KEYHO	HEXFE	FOXEV	LINDE
3000	2600	1780	1500 / 3500
GP 3.00° TCH 40		1.1 NM to RW14	
	5.1 NM	2.6 NM	1.2 NM / 1.1 NM
CATEGORY	A	B	C
LPV DA		1263-3/4	250 (300-3/4)
LNAV/VNAV DA		1310-7/8	297 (300-7/8)
LNAV MDA		1380-1	367 (400-1)
CIRCLING	1440-1 427 (500-1)	1480-1 467 (500-1)	1600-1 1/2 587 (600-1 1/2) / 1840-2 3/4 827 (900-2 3/4)



NC-3, 14 MAY 2026 to 11 JUN 2026

NC-3, 14 MAY 2026 to 11 JUN 2026