

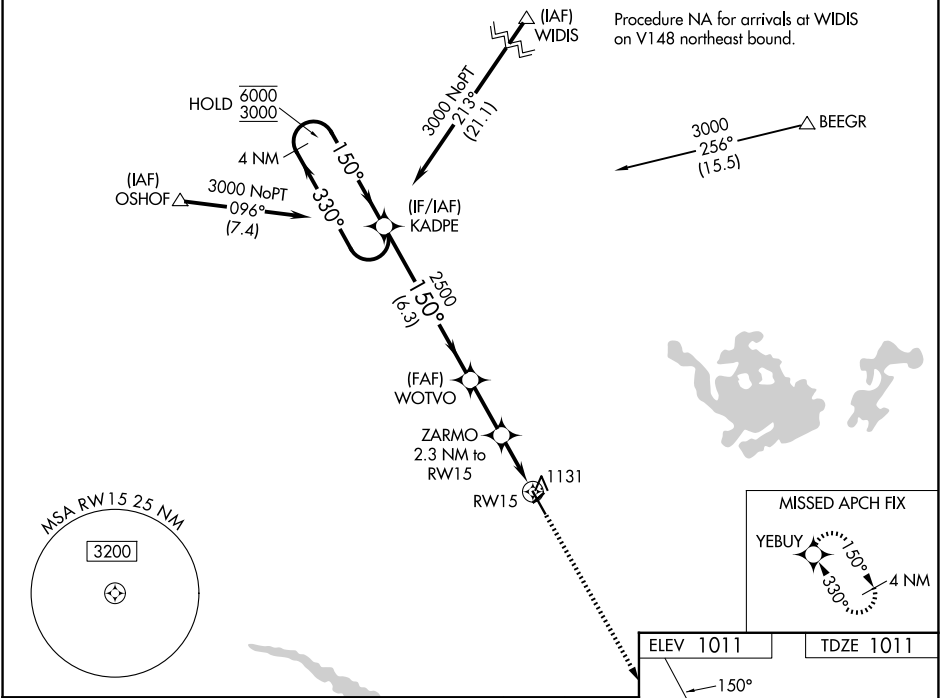
WAAS CH <b>87131</b> <b>W15A</b>	APP CRS <b>150°</b>	Rwy Ldg <b>5401</b> TDZE <b>1011</b> Apt Elev <b>1011</b>
----------------------------------------	------------------------	--------------------------------------------------------------------------

# RNAV (GPS) RWY 15

NEW ULM MUNI (ULM)

RNP APCH.	MISSED APPROACH: Climb to 3000 direct YEBUY and hold.
<p>▼ Circling NA to Rws 4 and 22. For uncompensated Baro-VNAV systems, LNAV/VNAV NA below -17°C or above 54°C.</p>	

AWOS-3 <b>118.325</b>	MINNEAPOLIS CENTER <b>127.1 290.2</b>	GCO <b>121.725</b>	UNICOM <b>123.0 (CTAF) 0</b>
--------------------------	------------------------------------------	-----------------------	---------------------------------



VGSI and RNAV glidepath not coincident (VGSI Angle 3.00/TCH 25).

4 NM Holding Pattern KADPE

6000 ← 330°  
3000 → 150°

GP 3.00°  
TCH 40

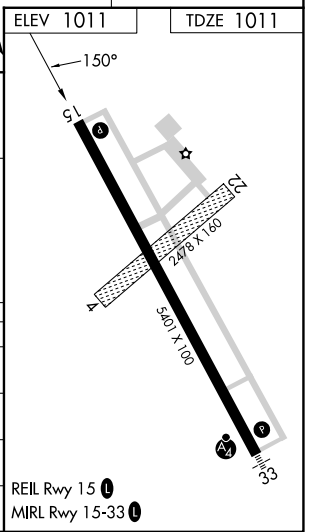
2500

1760

1.2 NM to RW15

6.3 NM | 2.3 NM | 1.1 NM | 1.2 NM

CATEGORY	A	B	C	D
LPV DA		1261-1	250 (300-1)	
LNAV/VNAV DA		1298-1	287 (300-1)	
LNAV MDA	1400-1	389 (400-1)	1400-1½	389 (400-1½)
CIRCLING	1440-1 429 (500-1)	1500-1 489 (500-1)	1620-1¾ 609 (700-1¾)	1620-2 609 (700-2)



NC-1, 14 MAY 2026 to 11 JUN 2026

NC-1, 14 MAY 2026 to 11 JUN 2026