

APP CRS	Rwy Idg	<b>5009</b>
	TDZE	<b>480</b>
<b>317°</b>	Apt Elev	<b>494</b>

# RNAV (GPS) RWY 32

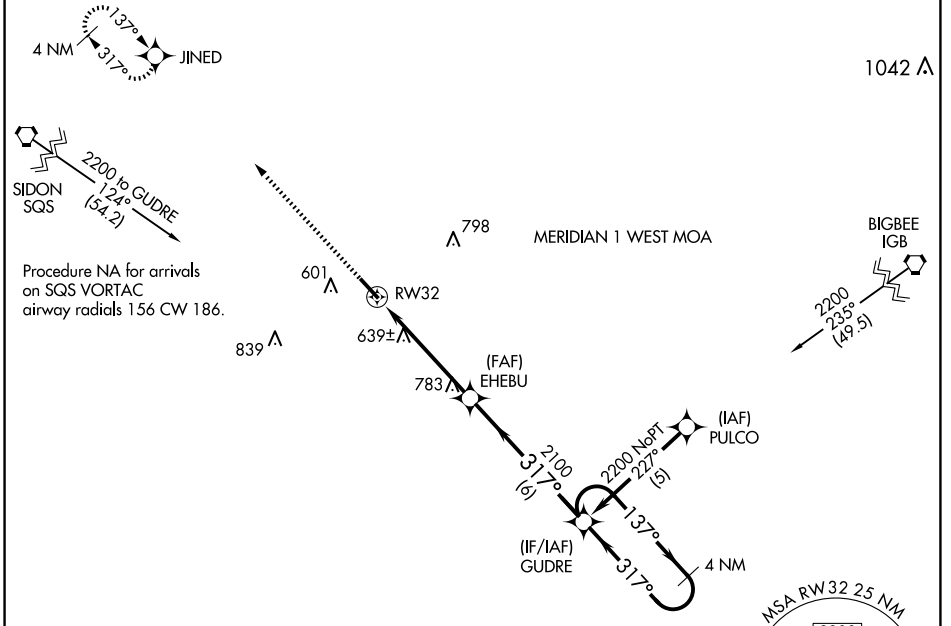
KOSCIUSKO-ATTALA COUNTY (OSX)

RNP APCH - GPS.

▼ Rwy 32 helicopter visibility reduction below 1 SM NA. Procedure NA at night. Use Philadelphia altimeter setting; when not received, use Greenwood altimeter setting and increase all MDAs 80 feet, increase visibility LNAV Cat C 3/4 SM and Circling Cat C 3/4 SM.

MISSED APPROACH: Climb to 2100 direct JINED and hold.

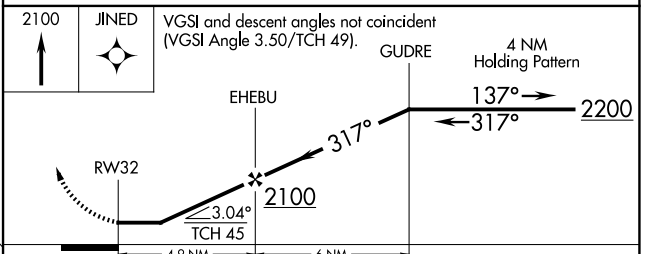
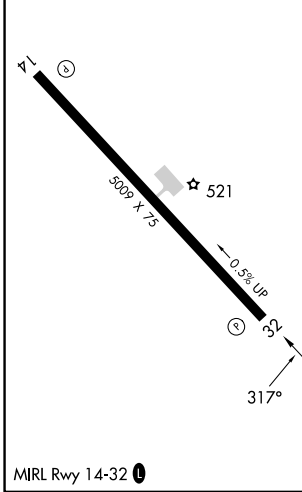
MPE AWOS-3P <b>118.725</b>	MEMPHIS CENTER <b>132.75 263.0</b>	CTAF <b>122.9 0</b>
-------------------------------	---------------------------------------	------------------------



SC-4, 14 MAY 2026 to 11 JUN 2026

SC-4, 14 MAY 2026 to 11 JUN 2026

ELEV 494	TDZE 480
----------	----------



CATEGORY	A	B	C	D
LNAV MDA	960-1	480 (500-1)	960-1 3/8 480 (500-1 3/8)	NA
CIRCLING	1020-1	526 (600-1)	1160-1 3/4 666 (700-1 3/4)	NA