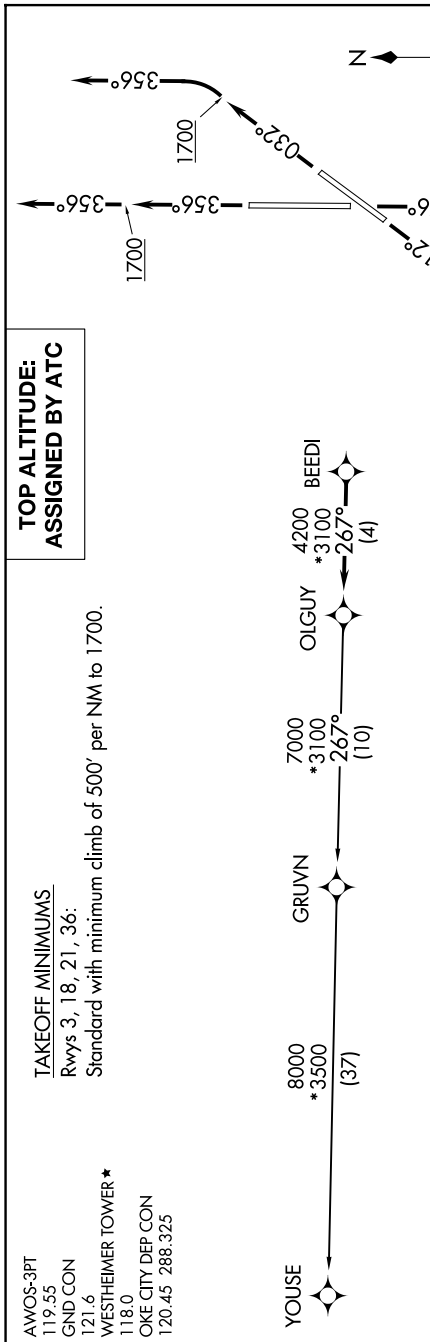


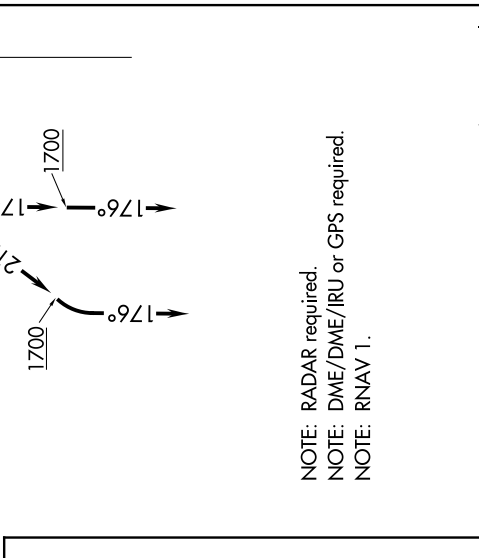
SC-1, 14 MAY 2026 to 11 JUN 2026



**TOP ALTITUDE:
ASSIGNED BY ATC**

TAKEOFF MINIMUMS
Rwys 3, 18, 21, 36:
Standard with minimum climb of 500' per NM to 1700.

WESTHEIMER TOWER*
AWOS-3PT 119.55
GND CON 121.6
118.0
OKE CITY DEP CON 120.45 288.325



DEPARTURE ROUTE DESCRIPTION

TAKEOFF RUNWAY 3: Climb on heading 032° to 1700, then left turn heading 356° or as assigned by ATC, expect RADAR vectors to BEEDI, thence

TAKEOFF RUNWAY 18: Climb on heading 176° to 1700, then heading 176° or as assigned by ATC, expect RADAR vectors to BEEDI, thence

TAKEOFF RUNWAY 21: Climb on heading 212° to 1700, then left turn heading 176° or as assigned by ATC, expect RADAR vectors to BEEDI, thence

TAKEOFF RUNWAY 36: Climb on heading 356° to 1700, then heading 356° or as assigned by ATC, expect RADAR vectors to BEEDI, thence

. . . . on track 267° to OLGUY, then on (transition). Maintain 3000 or as assigned by ATC. Expect filed altitude 10 minutes after departure.

GRUVN TRANSITION (OLGUY3.GRUVN)
YOUSE TRANSITION (OLGUY3.YOUSE)

NOTE: RADAR required.
NOTE: DME/DME/IRU or GPS required.
NOTE: RNAV 1.

NOTE: Chart not to scale.

SC-1, 14 MAY 2026 to 11 JUN 2026