

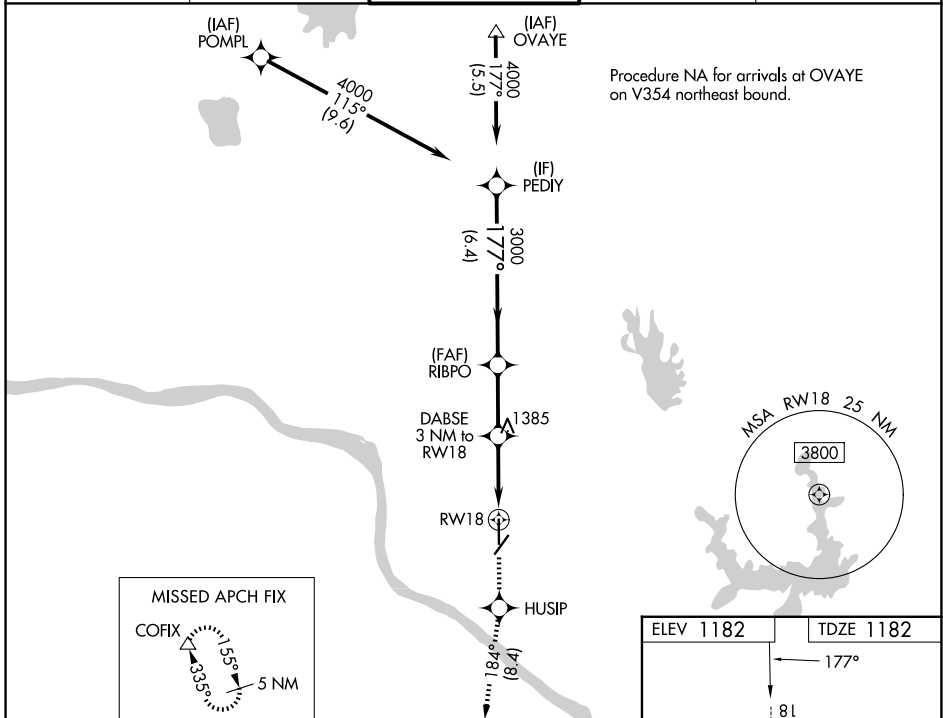
WAAS CH 58302 W18A	APP CRS 177°	Rwy Ldg 5199 TDZE 1182 Apt Elev 1182
--	------------------------	---

RNAV (GPS) RWY 18

UNIVERSITY OF OKLAHOMA WESTHEIMER (OUN)

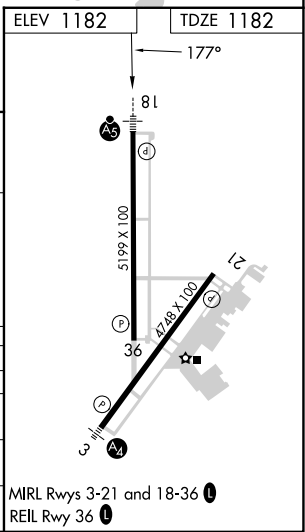
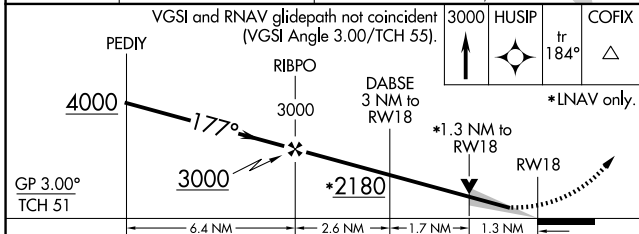
RNP APCH.	MALSR 	MISSED APPROACH: Climb to 3000 direct HUSIP and track 184° to COFIX and hold.
-----------	-----------	---

AWOS-3PT 119.55	OKE CITY APP CON 120.45 288.325	WESTHEIMER TOWER ★ 118.0 (CTAF)	GND CON 121.6	UNICOM 122.95
---------------------------	---	---	-------------------------	-------------------------



SC-1, 14 MAY 2026 to 11 JUN 2026

SC-1, 14 MAY 2026 to 11 JUN 2026



GP 3.00° TCH 51	VGSi and RNAV glidepath not coincident (VGSi Angle 3.00/TCH 55). PEDIY RIBPO DABSE 3 NM to RW18 RW18 COFIX 4000 3000 1385 181° 184° △ 6.4 NM 2.6 NM 1.7 NM 1.3 NM *LNAV only.			
CATEGORY	A	B	C	D
LPV DA	1382-1/2		200 (200-1/2)	
LNAV/DA VNAV	1490-1/2		308 (400-1/2)	
LNAV MDA	1640-1/2	458 (500-1/2)	1640-7/8	458 (500-7/8)
CIRCLING	1660-1	478 (500-1)	1940-2 1/4 758 (800-2 1/4)	1940-2 1/2 758 (800-2 1/2)