

# RDHWK THREE DEPARTURE (RNAV)

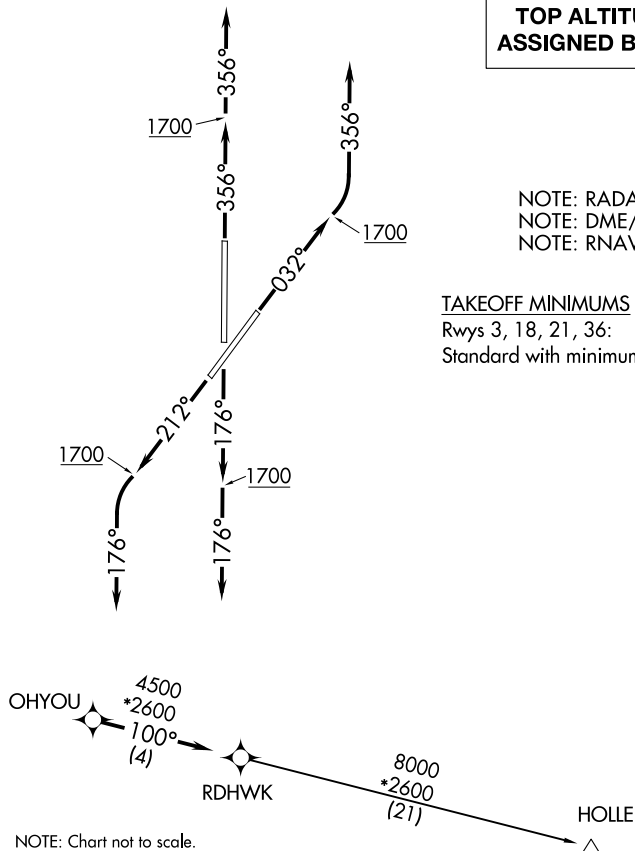
**TOP ALTITUDE:  
ASSIGNED BY ATC**

AWOS-3PT  
119.55  
GND CON  
121.6  
WESTHEIMER TOWER ★  
118.0  
OKE CITY DEP CON  
120.45 288.325

NOTE: RADAR required.  
NOTE: DME/DME/IRU or GPS required.  
NOTE: RNAV 1.

### TAKEOFF MINIMUMS

Rwys 3, 18, 21, 36:  
Standard with minimum climb of 500' per NM to 1700.



NOTE: Chart not to scale.

### DEPARTURE ROUTE DESCRIPTION

- TAKEOFF RUNWAY 3:** Climb on heading 032° to 1700, then left turn heading 356° or as assigned by ATC, expect RADAR vectors to OHYOU, thence . . . .
- TAKEOFF RUNWAY 18:** Climb on heading 176° to 1700, then heading 176° or as assigned by ATC, expect RADAR vectors to OHYOU, thence . . . .
- TAKEOFF RUNWAY 21:** Climb on heading 212° to 1700, then left turn heading 176° or as assigned by ATC, expect RADAR vectors to OHYOU, thence . . . .
- TAKEOFF RUNWAY 36:** Climb on heading 356° to 1700, then heading 356° or as assigned by ATC, expect RADAR vectors to OHYOU, thence . . . .

. . . . on track 100° to RDHWK, then on (transition). Maintain 3000 or as assigned by ATC. Expect filed altitude 10 minutes after departure.

HOLLE TRANSITION (RDHWK3.HOLLE)

SC-1, 14 MAY 2026 to 11 JUN 2026

SC-1, 14 MAY 2026 to 11 JUN 2026