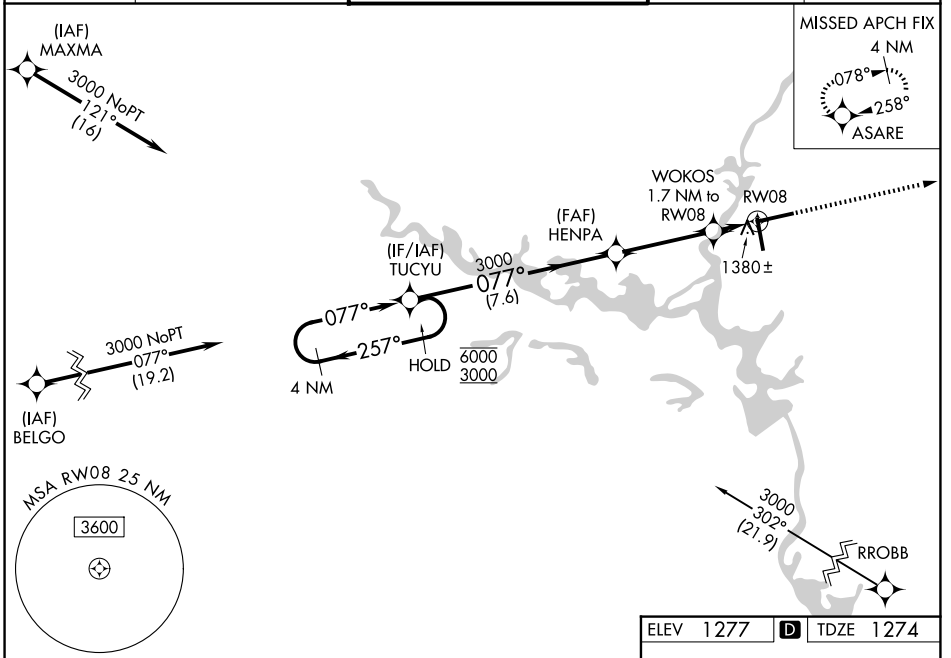


WAAS CH <b>42820</b> <b>W08A</b>	APP CRS <b>077°</b>	Rwy Ldg TDZE Apt Elev	<b>7724</b> <b>1274</b> <b>1277</b>
--	------------------------	-----------------------------	---

# RNAV (GPS) RWY 8

CENTRAL WISCONSIN (CWA)

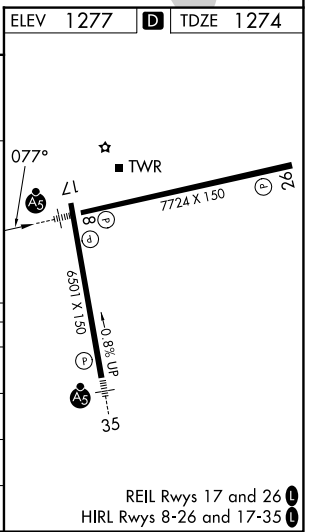
RNP APCH - GPS.		MALSR	MISSED APPROACH: Climb to 3000 direct ASARE and hold.		
<p>For uncompensated Baro-VNAV systems, LNAV/VNAV NA below -17°C or above 54°C. For inop ALS, increase LNAV Cat C and D visibility to 1½ SM.</p>					
ATIS <b>127.45</b>	MINNEAPOLIS CENTER <b>124.4 317.7</b>	CWA TOWER ★ <b>119.75 (CTAF) 360.7</b>		GND CON <b>121.9 360.7</b>	UNICOM <b>122.95</b>



EC-3, 14 MAY 2026 to 11 JUN 2026

EC-3, 14 MAY 2026 to 11 JUN 2026

ELEV 1277		D TDZE 1274	
4 NM Holding Pattern		3000 ASARE	
<p>TUCYU</p> <p>6000 ← 257°</p> <p>3000 → 077°</p> <p>GP 3.00°</p> <p>TCH 55</p>		<p>HENPA</p> <p>3000</p> <p>1860</p> <p>WOKOS</p> <p>1.7 NM to RW08</p> <p>1.1 NM to RW08</p> <p>RW08</p>	
7.6 NM		3.6 NM	
0.6 NM		1.1 NM	
CATEGORY	A	B	D
LPV DA		1474-½	200 (200-½)
LNAV/VNAV DA		1601-½	327 (400-½)
LNAV MDA	1640-½	366 (400-½)	1640-¾, 366 (400-¾)
CIRCLING	1740-1	463 (500-1)	1740-1½, 1840-2, 463 (500-1½), 563 (600-2)



REIL Rwy 17 and 26  
HIRL Rwy 8-26 and 17-35