

WAAS CH <b>82345</b> <b>W33A</b>	APP CRS <b>335°</b>	Rwy Ldg TDZE Apt Elev	<b>5798</b> <b>1393</b> <b>1403</b>
--	------------------------	-----------------------------	---

# RNAV (GPS) RWY 33

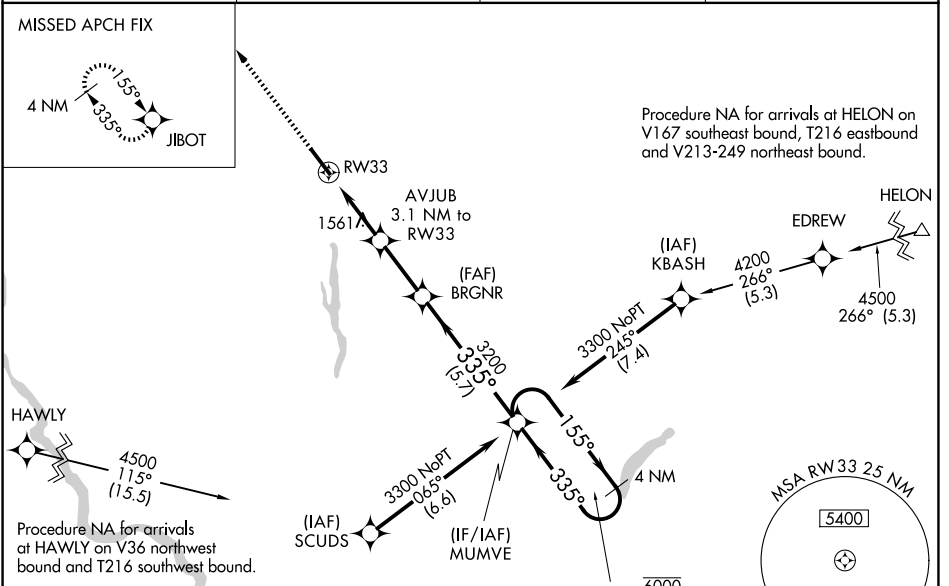
SULLIVAN COUNTY INTL (MSV)

RNP APCH - GPS.

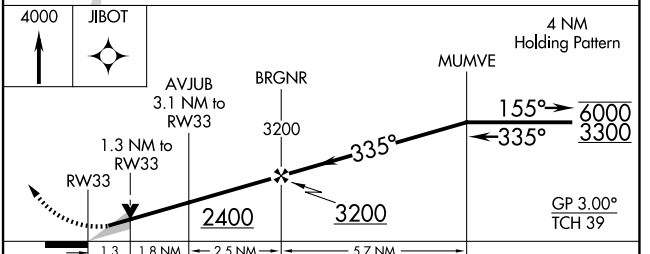
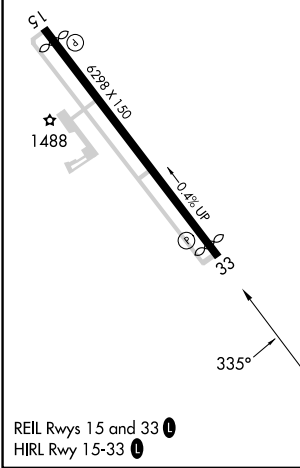
⚠ For uncompensated Baro-VNAV systems, LNAV/VNAV NA below -17°C or above 54°C. Baro-VNAV and VDP NA when using New York Stewart Intl altimeter setting. When local altimeter setting not received, use New York Stewart Intl altimeter setting: increase LPV DA to 1848 feet and all visibilities 3/8 SM; increase LNAV/VNAV DA to 1861 feet and all visibilities 3/8 SM; increase all MDAs 220 feet and LNAV visibility Cat C and D 3/8 SM, and Circling visibility Cat C 3/4 SM and Cat D 1/2 SM.

MISSED APPROACH: Climb to 4000 direct JIBOT and hold.

AWOS-3PT <b>124.725</b>	NEW YORK APP CON <b>132.75 363.1</b>	CLNC DEL <b>121.6</b>	UNICOM <b>122.8 (CTAF) 0</b>
----------------------------	---	--------------------------	---------------------------------



ELEV 1403	<b>D</b>	TDZE 1393
-----------	----------	-----------



CATEGORY	A	B	C	D
LPV DA		1643-1	250 (300-1)	
LNAV/VNAV DA		1656-1	263 (300-1)	
LNAV MDA	1820-1	427 (500-1)	1820-1¼	427 (500-1¼)
CIRCLING	1900-1 497 (500-1)	1920-1 517 (600-1)	2020-1¾ 617 (700-1¾)	2180-2½ 777 (800-2½)

NE-2, 14 MAY 2026 to 11 JUN 2026

NE-2, 14 MAY 2026 to 11 JUN 2026