

12JUN25

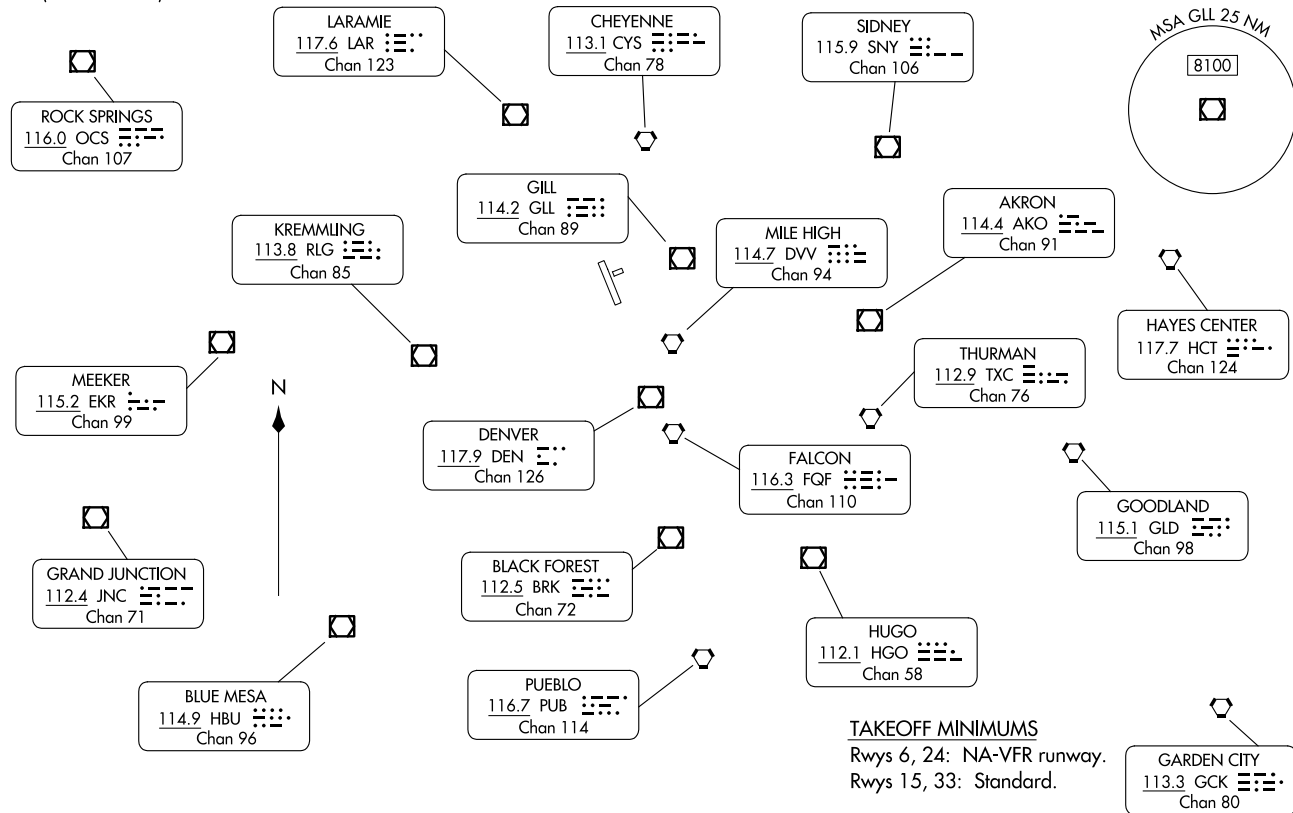
DENVER THREE DEPARTURE

FORT COLLINS/LOVELAND, COLORADO
NORTHERN COLORADO RGNI (FNL)

DENVER DEP CON
134.85 251.125
CLNC DEL
120.25 (when twr closed)

RADAR required.

TOP ALTITUDE:
ASSIGNED BY ATC.



NOTE: Chart not to scale.

(CONTINUED ON FOLLOWING PAGE)

25163

DENVER THREE DEPARTURE

AL-5677 (FAA)

NORTHERN COLORADO RGNI (FNL)
FORT COLLINS/LOVELAND, COLORADO



DEPARTURE ROUTE DESCRIPTION

TAKEOFF RUNWAY 15: Climb to assigned altitude and heading between 180° CCW 350° from end of runway, thence. . . .

TAKEOFF RUNWAY 33: Climbing right turn to assigned altitude and heading between 350° CW 150° from DER, thence. . . .

. . . .RADAR vectors to assigned route. Expect filed altitude 10 minutes after departure.

LOST COMMUNICATIONS: If no transmissions are received within one minute after departure, maintain assigned heading until 7000, then climb to filed altitude direct to DEN VOR/DME, then on assigned route. If filed altitude is above 10000, cross DEN VOR/DME at or above 11000.

SW-1, 14 MAY 2026 to 11 JUN 2026

SW-1, 14 MAY 2026 to 11 JUN 2026