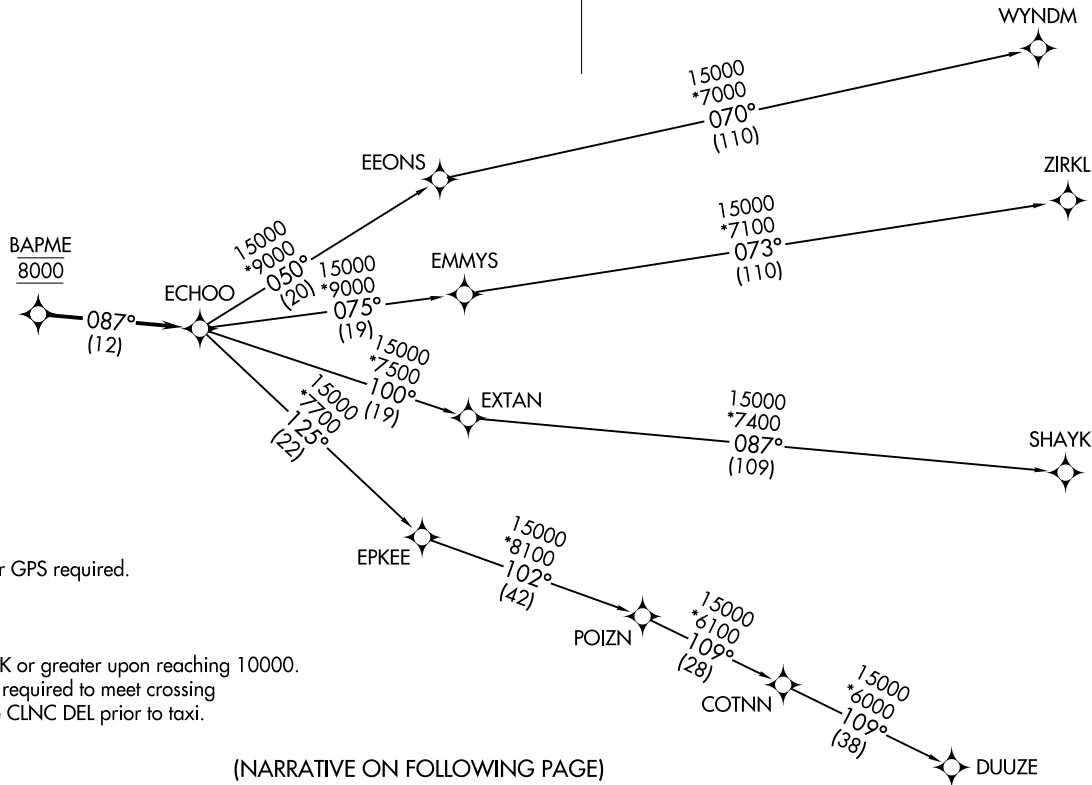


**TOP ALTITUDE:  
FL230**

CLNC DEL 120.25  
DENVER DEP CON 134.85 251.125



TAKEOFF MINIMUMS

Rwys 6, 24: NA.  
Rwys 15, 33: Standard.

- NOTE: DME/DME/IRU or GPS required.
- NOTE: RNAV 1.
- NOTE: Turbojets only.
- NOTE: RADAR required.
- NOTE: Accelerate to 250K or greater upon reaching 10000.  
If slower speed is required to meet crossing restrictions advise CLNC DEL prior to taxi.

NOTE: Chart not to scale.

(NARRATIVE ON FOLLOWING PAGE)

ECHOO ONE DEPARTURE (RNAV)  
(ECHOO1:ECHOO) 26MAR20

FORT COLLINS/LOVELAND, COLORADO  
NORTHERN COLORADO RGNL (FNTL)

(ECHOO1:ECHOO) 20086  
ECHOO ONE DEPARTURE (RNAV)

AL:5677 (FAA)  
NORTHERN COLORADO RGNL (FNTL)  
FORT COLLINS/LOVELAND, COLORADO



DEPARTURE ROUTE DESCRIPTION

TAKEOFF RUNWAY 15: Climb on a heading between 350° CW 180° as assigned by ATC. Thence. . . .

TAKEOFF RUNWAY 33: Climbing right turn on a heading between 350° CW 150° as assigned by ATC. Thence. . . .

. . . .expect RADAR vectors to cross BAPME at 8000 then on track 087° to ECHOO, then on (transition) maintain FL230 or filed lower altitude. Expect higher filed altitude ten minutes after departure.

DUUZE TRANSITION (ECHOO1.DUUZE)

SHAYK TRANSITION (ECHOO1.SHAYK)

WYNDM TRANSITION (ECHOO1.WYNDM)

ZIRKL TRANSITION (ECHOO1.ZIRKL)

SW-1, 14 MAY 2026 to 11 JUN 2026

SW-1, 14 MAY 2026 to 11 JUN 2026