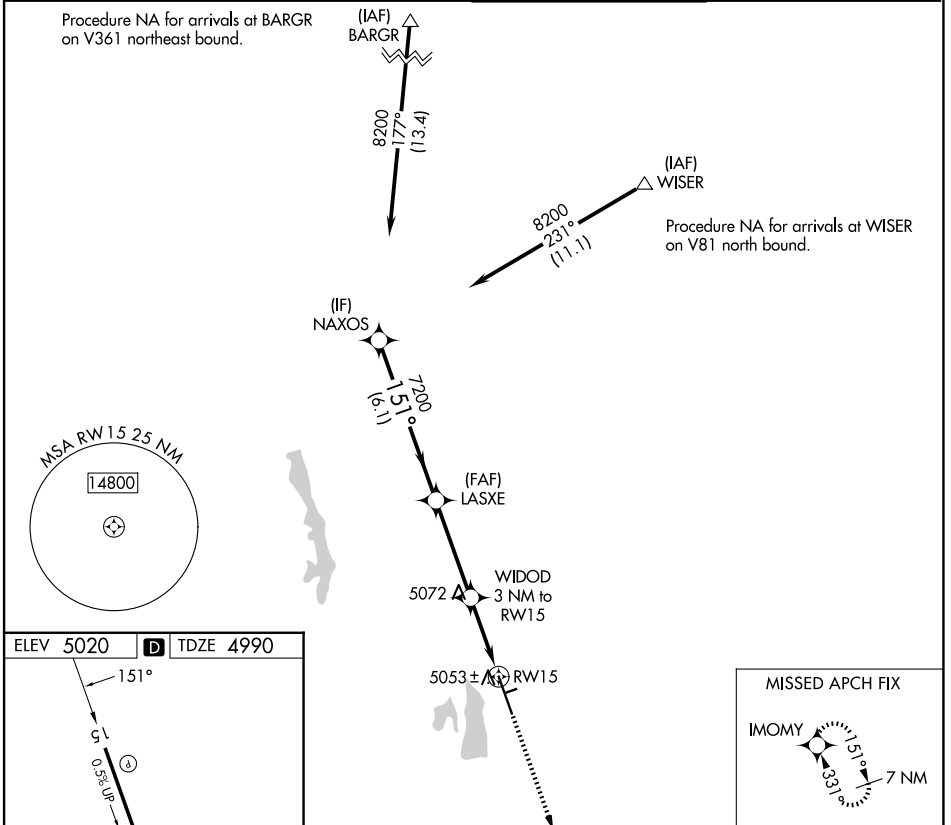


APP CRS 151°	Rwy Ldg TDZE Apt Elev	8500 4990 5020
------------------------	-----------------------------	---

RNAV (GPS) RWY 15

NORTHERN COLORADO RGNL (FNL)

RNP APCH-GPS.		MISSED APPROACH: Climb to 7600 direct IMOMY and hold.	
ATIS 135.075	DENVER APP CON 134.85 251.125	NOCO TOWER * 118.4 (CTAF) 0	GND CON 121.65



NAXOS		VGS1 and descent angles not coincident (VGS1 Angle 3.00/TCH 54).		7600	IMOMY
8200	7200	5980			
6.1 NM	3.7 NM	2.1 NM	0.9 NM		
LASXE		WIDOD 3 NM to RW15			
151°		3.05° TCH 50			
		0.9 NM to RW15			
CATEGORY	A	B	C	D	
LNAV MDA	5320-1 330 (300-1)				

SW-1, 14 MAY 2026 to 11 JUN 2026

SW-1, 14 MAY 2026 to 11 JUN 2026