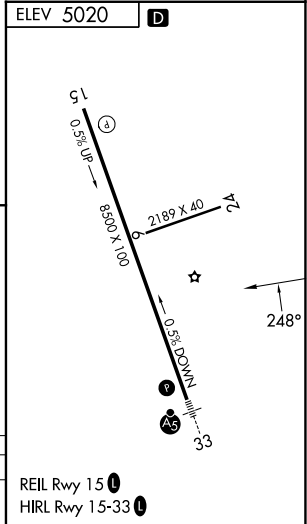
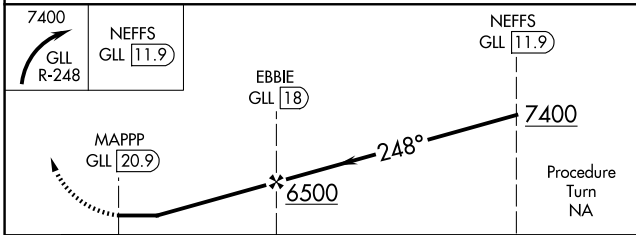
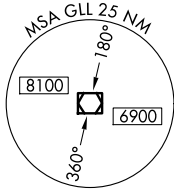
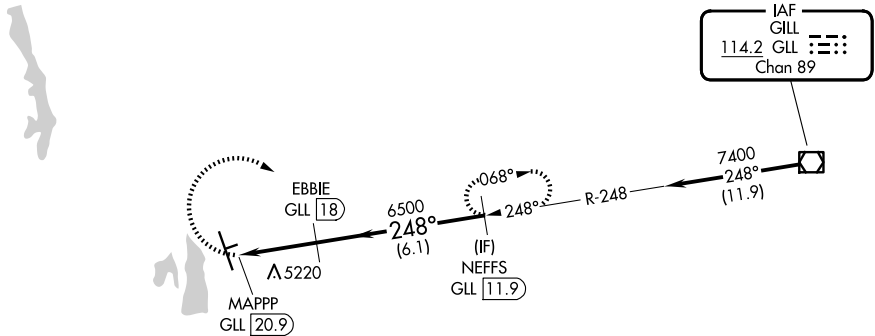


VOR/DME GLL 114.2 Chan 89	APP CRS 248°	Rwy Ldg TDZE Apt Elev N/A 5020
---	------------------------	---

VOR-A
NORTHERN COLORADO RGNL (FNL)

DME required.		MISSED APPROACH: Climbing right turn to 7400 via GLL VOR/DME R-248 to NEFFS/GLL 11.9 DME and hold.	
<p>▼ Circling Rwy 24 NA at night. When local altimeter setting not received, use Denver Intl altimeter setting and increase all MDA 160 feet and Cat C/D visibility ½ SM.</p> <p>▲</p>		ATIS 135,075	DENVER APP CON 134.85 251.125
		NOCO TOWER * 118.4 (CTAF) 0	GND CON 121.65

Procedure NA for arrivals on GLL VOR/DME airway radials 221 CW 301.



CATEGORY	A	B	C	D
CIRCLING	5480-1 460 (500-1)	5520-1 500 (500-1)	5520-1½ 500 (500-1½)	5700-2¼ 680 (700-2¼)

REIL Rwy 15 0
HIRL Rwy 15-33 0

SW-1, 14 MAY 2026 to 11 JUN 2026

SW-1, 14 MAY 2026 to 11 JUN 2026