

YELLOWSTONE FIVE DEPARTURE
(YELLOW.DEN) 12JUN25

FORT COLLINS/LOVELAND, COLORADO
NORTHERN COLORADO RGNL (FNL)

DENVER DEP CON
134.85 251.125
CLNC DEL
120.25 (when twr clsd)

MEDICINE BOW
116.85 MBW
Chan 115(Y)

RAPID CITY
112.3 RAP
Chan 70

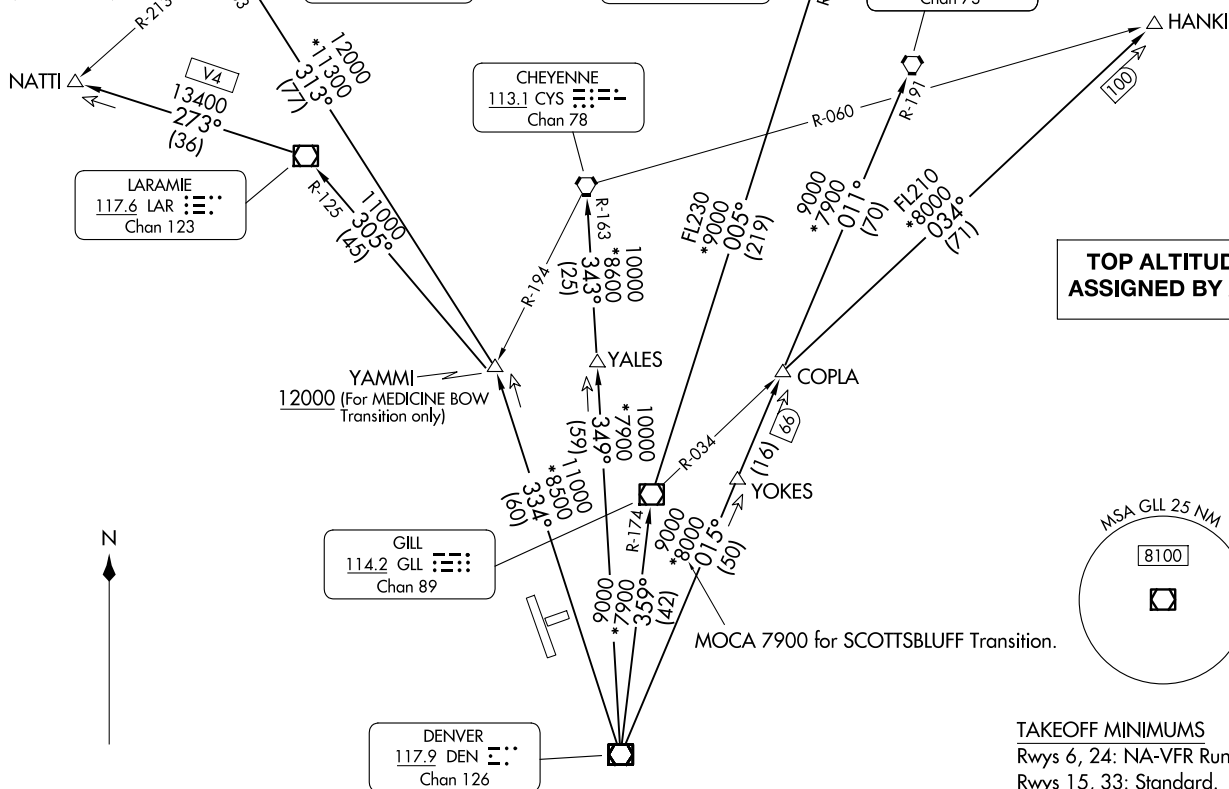
SCOTTSBLUFF
112.6 BFF
Chan 73

CHEYENNE
113.1 CYS
Chan 78

LARAMIE
117.6 LAR
Chan 123

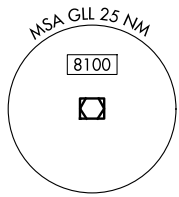
GILL
114.2 GLL
Chan 89

DENVER
117.9 DEN
Chan 126



RADAR required.

**TOP ALTITUDE:
ASSIGNED BY ATC**



TAKEOFF MINIMUMS
Rwys 6, 24: NA-VFR Runway.
Rwys 15, 33: Standard.

NOTE: Chart not to scale.

(CONTINUED ON FOLLOWING PAGE)

(YELLOW.DEN) 251.63
YELLOWSTONE FIVE DEPARTURE

AL-5677 (FAA)

NORTHERN COLORADO RGNL (FNL)
FORT COLLINS/LOVELAND, COLORADO



DEPARTURE ROUTE DESCRIPTION

TAKEOFF RUNWAY 15: Climb to assigned altitude and heading between 180° CCW 350° from end of runway, thence. . . .

TAKEOFF RUNWAY 33: Climbing right turn to assigned altitude and heading between 350° CW 150° from DER, thence. . . .

. . . .RADAR vectors to assigned route. Expect filed altitude 10 minutes after departure.

LOST COMMUNICATIONS: If no transmissions are received within one minute after departure, maintain assigned heading until 7000, then climb to filed altitude direct to DEN VOR/DME, then on assigned route. If filed altitude is above 10000, cross DEN VOR/DME at or above 11000.

CHEYENNE TRANSITION (YELLOW5.CYS): From over DEN VOR/DME on DEN R-349 and CYS R-163 to CYS VORTAC.

HANKI TRANSITION (YELLOW5.HANKI): From over DEN VOR/DME on DEN R-015 and GLL R-034 to HANKI.

LARAMIE TRANSITION (YELLOW5.LAR): From over DEN VOR/DME on DEN R-334 and LAR R-125 to LAR VOR/DME.

MEDICINE BOW TRANSITION (YELLOW5.MBW): From over DEN VOR/DME on DEN R-334 and MBW R-133 to MBW VOR/DME.

NATTI TRANSITION (YELLOW5.NATTI): From over DEN VOR/DME on DEN R-334 and LAR R-125 to LAR VOR/DME, then on LAR R-273 to NATTI.

RAPID CITY TRANSITION (YELLOW5.RAP): From over DEN VOR/DME on DEN R-359 and GLL R-174 to GLL VOR/DME, then on GLL R-005 and RAP R-186 to RAP VORTAC.

SCOTTSBLUFF TRANSITION (YELLOW5.BFF): From over DEN VOR/DME on DEN R-015 and BFF R-191 to BFF VORTAC.

SW-1, 14 MAY 2026 to 11 JUN 2026

SW-1, 14 MAY 2026 to 11 JUN 2026