

WAAS CH <b>48923</b> <b>W14A</b>	APP CRS <b>143°</b>	Rwy Ldg <b>5001</b> TDZE <b>23</b> Apt Elev <b>23</b>
--	------------------------	---

# RNAV (GPS) RWY 14

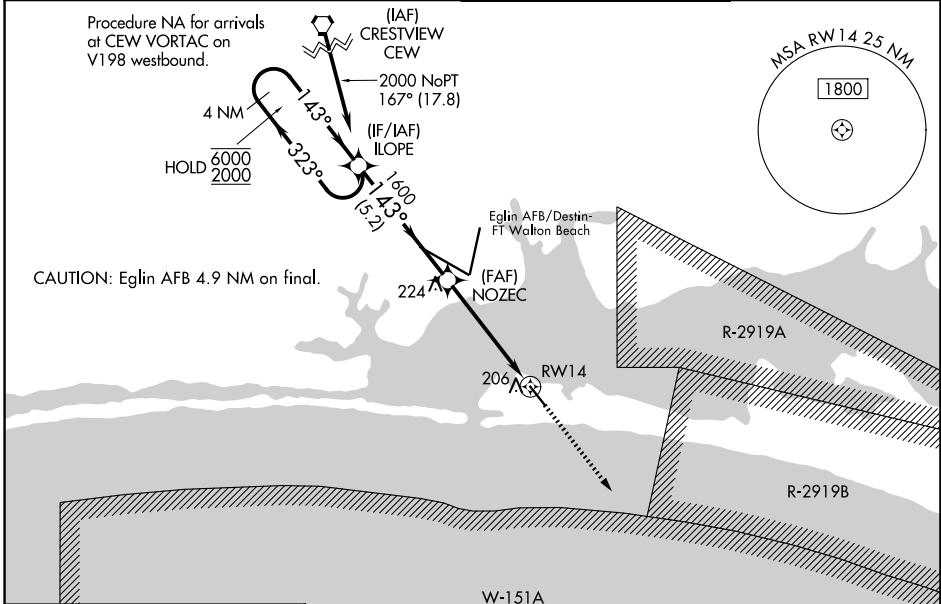
DESTIN EXEC (DTS)

RNP APCH - GPS.

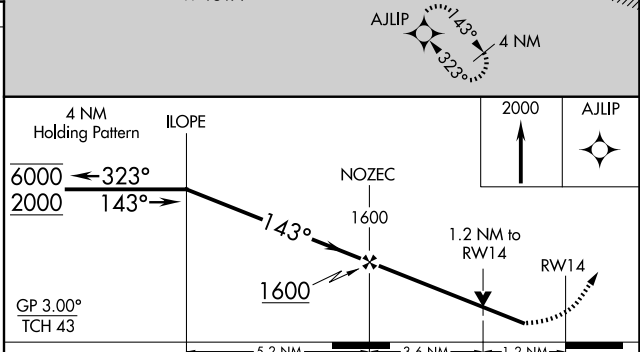
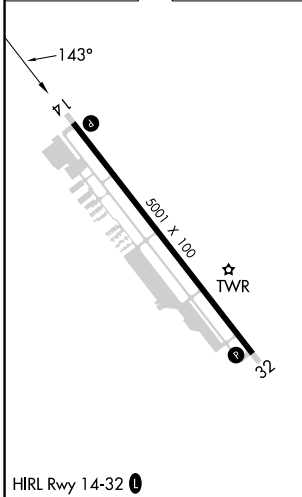
**⚠** Baro-VNAV and VDP NA when using CEW altimeter setting. Rwy 14 helicopter visibility reduction below ¼ SM NA. For uncompensated Baro-VNAV systems, LNAV/VNAV NA below 0°C or above 54°C. When local altimeter setting not received, use CEW altimeter setting: increase LPV DA to 353 feet; increase LNAV/VNAV DA to 447 feet and all visibilities ½ SM; increase all MDAs 80 feet and LNAV visibility Cats C and D ½ SM, and Circling visibility Cats C and D ¼ SM.

**MISSED APPROACH:**  
Climb to 2000 direct AJLIP and hold.

ATIS <b>133.925</b>	EGLIN APP CON <b>132.1 360.6</b>	DESTIN TOWER ★ <b>118.45 (CTAF) 0</b>	GND CON <b>121.6</b>
------------------------	-------------------------------------	--	-------------------------



ELEV 23	TDZE 23
---------	---------



CATEGORY	A	B	C	D
LPV DA	273-1 250 (300-1)			
LNAV/VNAV DA	367-1½ 344 (400-1½)			
LNAV MDA	460-1	437 (500-1)	460-1¼	437 (500-1¼)
CIRCLING	580-1 557 (600-1)		680-1¾	680-2
			657 (700-1¾)	657 (700-2)

SE-3, 14 MAY 2026 to 11 JUN 2026

SE-3, 14 MAY 2026 to 11 JUN 2026