

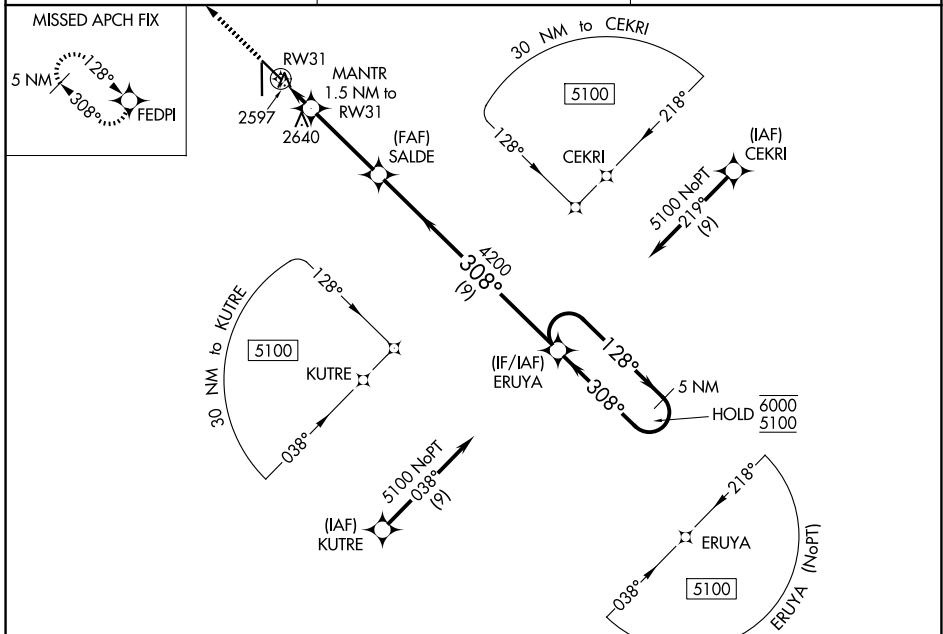
WAAS CH 86507 W31A	APP CRS 308°	Rwy Ldg TDZE Apt Elev	5501 2585 2589
--	------------------------	-----------------------------	---

RNAV (GPS) RWY 31

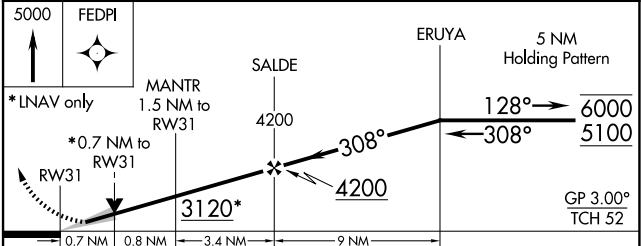
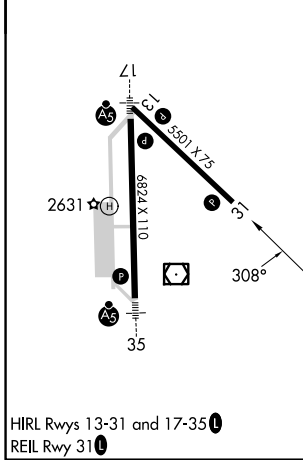
AINSWORTH RGNL (ANW)

RNP APCH.	MISSED APPROACH: Climb to 5000 direct FEDPI and hold.
<p>For uncompensated Baro-VNAV systems, LNAV/VNAV NA below -20°C or above 54°C.</p>	

AWOS-3 118,325	DENVER CENTER 127,95 338.2	UNICOM 122.8 (CTAF)
--------------------------	--------------------------------------	-------------------------------



ELEV 2589	TDZE 2585
------------------	------------------



CATEGORY	A	B	C	D
LPV DA		2785-1	200 (200-1)	
LNAV/VNAV DA		2835-1	250 (300-1)	
LNAV MDA		2860-1	275 (300-1)	
CIRCLING	3000-1 411 (500-1)	3040-1 451 (500-1)	3040-1½ 451 (500-1½)	3200-2 611 (700-2)

NC-2, 14 MAY 2026 to 11 JUN 2026

NC-2, 14 MAY 2026 to 11 JUN 2026