

VOR/DME ANW <b>112.7</b> Chan <b>74</b>	APP CRS <b>008°</b>	Rwy Ldg TDZE Apt Elev <b>6824</b> <b>2589</b> <b>2589</b>
---	------------------------	--

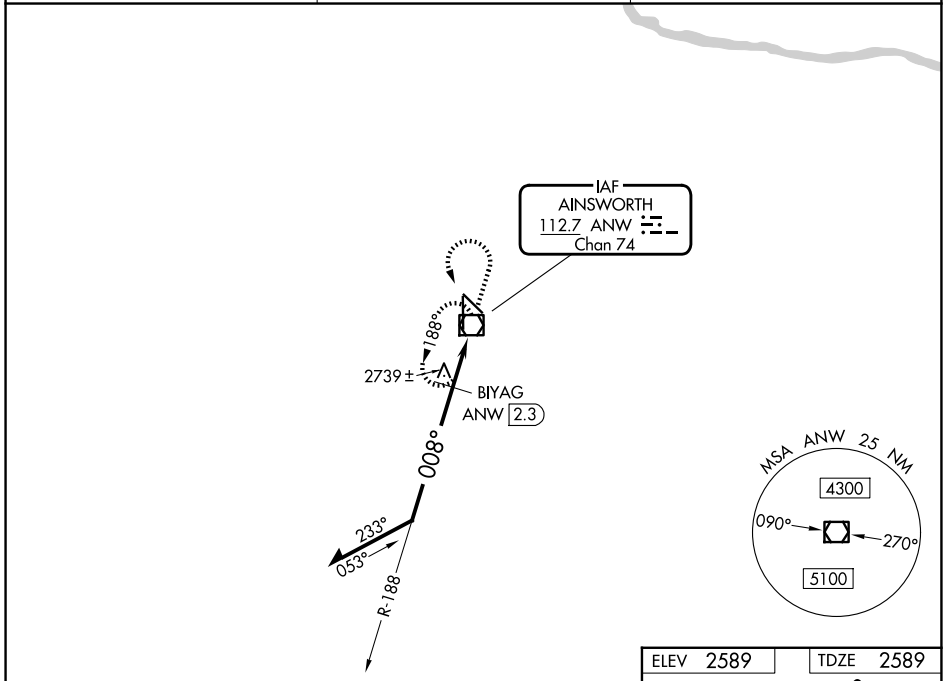
# VOR RWY 35

AINSWORTH RGNL (A.N.W)

⚠ When local altimeter setting not received, procedure NA.  
⚠ For inoperative ALS, increase BIYAG fix minimums S-35 Cat D visibility to 1¼.

⚠ MISSED APPROACH: Climb to 3500 then climbing left turn to 6000 direct ANW VOR/DME and hold.

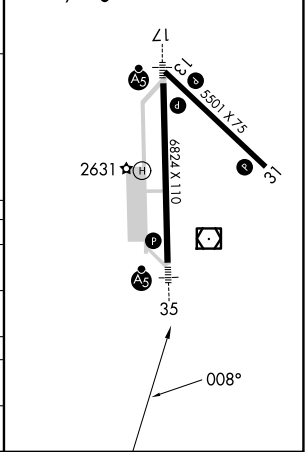
AWOS-3 <b>118.325</b>	DENVER CENTER <b>127.95 338.2</b>	UNICOM <b>122.8 (CTAF)</b>
--------------------------	--------------------------------------	-------------------------------



CATEGORY	A		B		C		D	
	3300-½		711 (800-½)		3300-1½		3300-1¾	
S-35	3300-½		711 (800-½)		3300-1½		3300-1¾	
CIRCLING	3300-1		711 (800-1)		3300-2		3300-2¼	
BIYAG FIX MINIMUMS (DME REQUIRED)								
S-35	3000-½		411 (500-½)		3000-¾		3000-1	
CIRCLING	3000-1		3040-1		3040-1½		3200-2	
	411 (500-1)		451 (500-1)		451 (500-1½)		611 (700-2)	

ELEV 2589	TDZE 2589
-----------	-----------

HIRL Rwys 13-31 and 17-35  
REIL Rwy 31



NC-2, 14 MAY 2026 to 11 JUN 2026

NC-2, 14 MAY 2026 to 11 JUN 2026