

# RNAV (GPS) RWY 31

CROOKSTON MUNI/KIRKWOOD FLD (CKN)

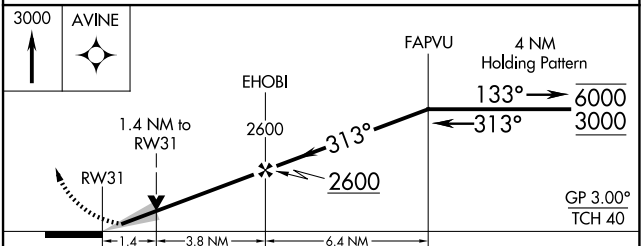
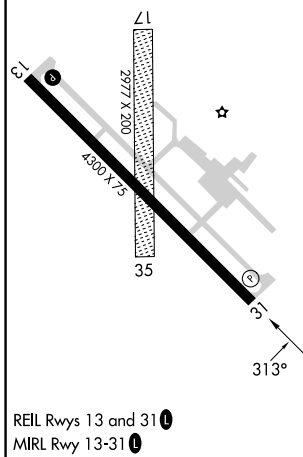
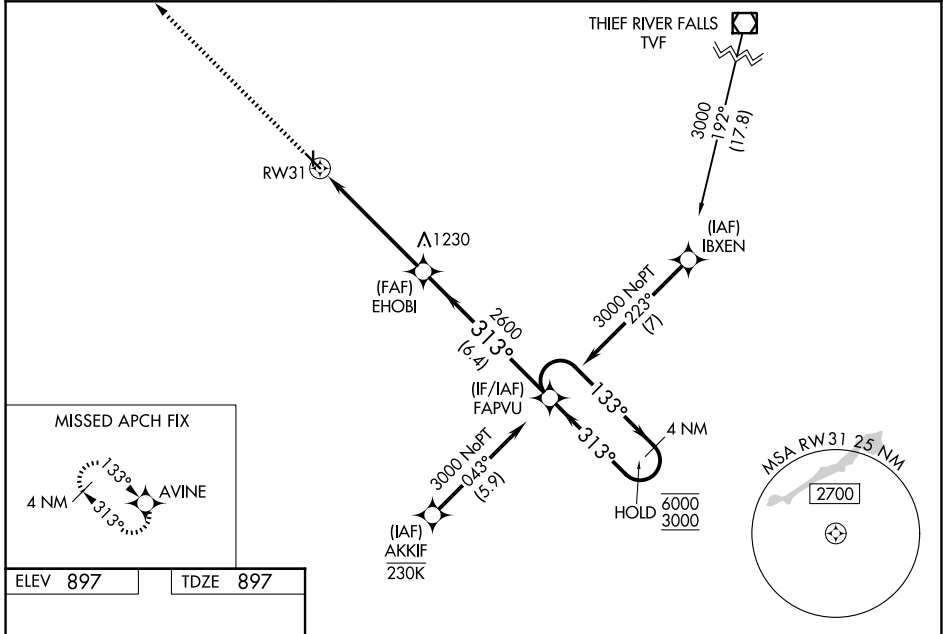
WAAS CH <b>69304</b> <b>W31A</b>	APP CRS <b>313°</b>	Rwy Ldg TDZE Apt Elev	<b>4300</b> <b>897</b> <b>897</b>
--	------------------------	-----------------------------	---

RNP APCH - GPS.

**⚠** For uncompensated Baro-VNAV systems, LNAV/VNAV NA below -16°C or above 54°C. Circling NA to Rwy 17 and 35. Baro-VNAV and VDP NA when using GFK altimeter setting. When local altimeter setting not received, use GFK altimeter setting and increase LPV DA to 1160 feet. Increase LNAV/VNAV DA to 1358 feet and all visibilities ¼ SM. Increase all MDAs 80 feet and LNAV and Circling visibility Cat C ¼ SM.

MISSED APPROACH: Climb to 3000 direct AVINE and hold.

AWOS-3 <b>126.425</b>	GRAND FORKS APP CON* <b>118.1 318.1</b>	UNICOM <b>122.7 (CTAF) 0</b>
--------------------------	--	---------------------------------



CATEGORY	A	B	C	D
LPV DA	1097-1 200 (200-1)			NA
LNAV/VNAV DA	1295-1½ 398 (400-1½)			NA
LNAV MDA	1380-1	483 (500-1)	1380-1¾ 483 (500-1¾)	NA
CIRCLING	1380-1	483 (500-1)	1480-1½ 583 (600-1½)	NA