

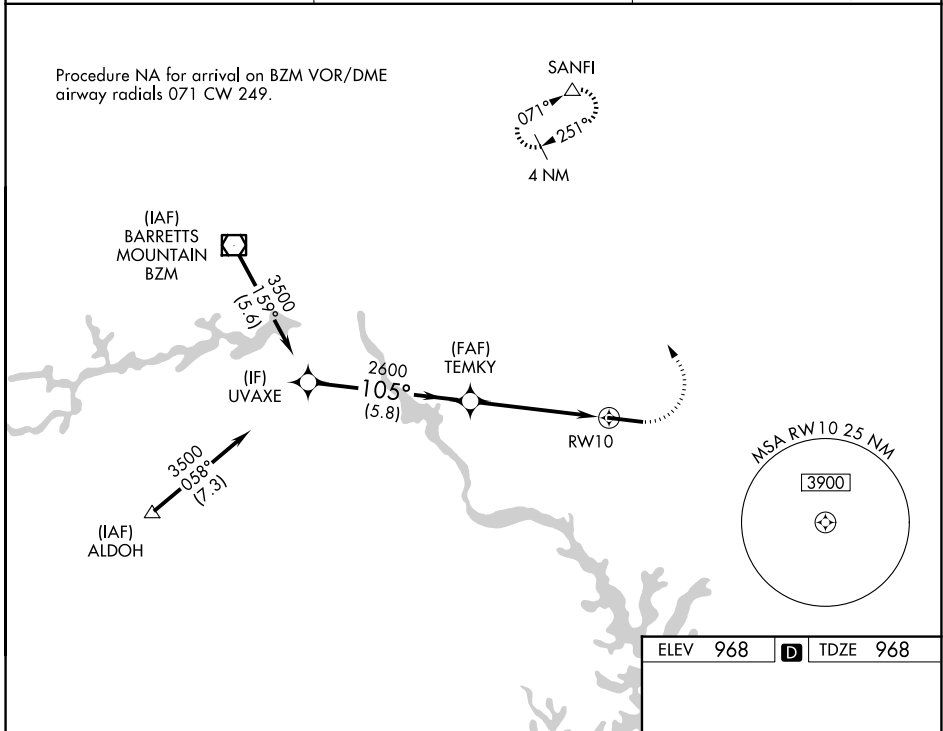
WAAS CH 99435 W10A	APP CRS 105°	Rwy Ldg TDZE Apt Elev	6453 968 968
--	------------------------	-----------------------------	---

RNAV (GPS) RWY 10

STATESVILLE RGNL (SVH)

RNP APCH - GPS.		MISSED APPROACH: Climb to 1440 then climbing left turn to 3400 direct SANFI and hold.
<p>▼ For uncompensated Baro-VNAV systems, LNAV/VNAV NA below -16°C or above 54°C.</p> <p>▲</p>		

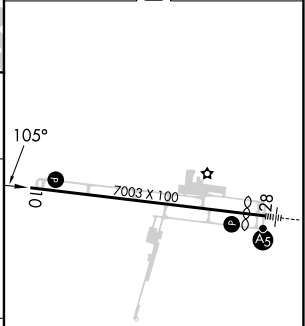
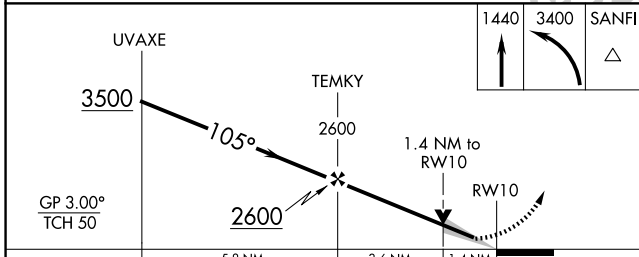
AWOS-3 119.225	ATLANTA CENTER 125.15 263.0	UNICOM 123.075 (CTAF)
--------------------------	---------------------------------------	---------------------------------



SE-2, 14 MAY 2026 to 11 JUN 2026

SE-2, 14 MAY 2026 to 11 JUN 2026

ELEV 968		TDZE 968
----------	--	----------



CATEGORY	A	B	C	D
LPV DA		1218-3/4	250 (300-3/4)	
LNAV/VNAV DA		1479-1 3/8	511 (600-1 3/8)	
LNAV MDA	1440-1	472 (500-1)	1440-1 3/8	472 (500-1 3/8)
CIRCLING	1440-1 472 (500-1)	1540-1 572 (600-1)	1540-1 1/2 572 (600-1 1/2)	1560-2 592 (600-2)

REIL Rwy 10

HIRL Rwy 10-28