

WAAS CH 60903 W28A	APP CRS 285°	Rwy Ldg TDZE 967 Apt Elev 968	6453
--	------------------------	---	-------------

RNAV (GPS) RWY 28

STATESVILLE RGNL (SVH)

RNP APCH - GPS.

▼ For uncompensated Baro-VNAV systems, LNAV/VNAV NA below -16°C or above 54°C.
▲ When local altimeter setting not received, use Lincolnton altimeter setting and increase LPV DA to 1218, LNAV/VNAV DA to 1269, and all MDA 60 feet; increase LNAV/VNAV all Cats and LNAV Cats C/D visibility 1/8, and Circling Cat C 1/4 mile. VDP and Baro-VNAV NA when using Lincolnton altimeter setting. For inop MALSRL, increase LNAV/VNAV all Cats and LNAV Cats C/D visibility to 2/8 mile. For inop MALSRL when using Lincolnton altimeter setting, increase LNAV/VNAV all Cats and LNAV Cats C/D visibility to 1 mile.

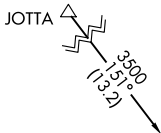


MISSED APPROACH:
 Climb to 1380 then climbing right turn to 3400 direct SANFI and hold.

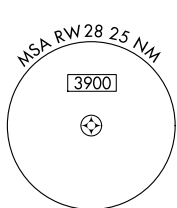
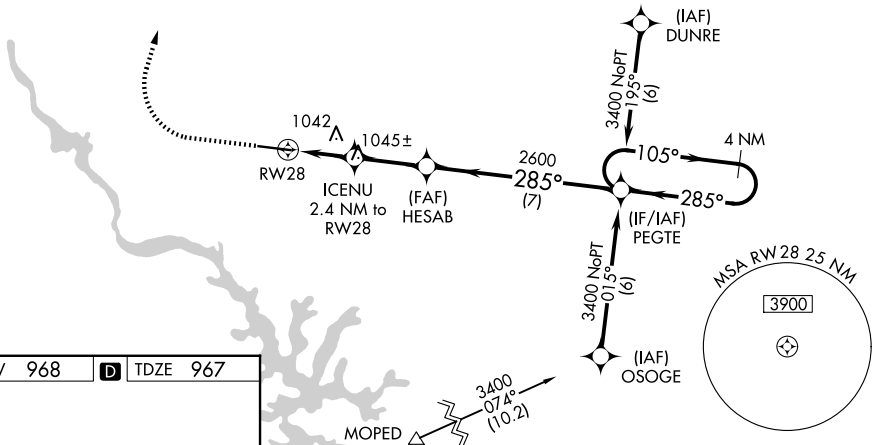
AWOS-3
119.225

ATLANTA CENTER
125.15 263.0

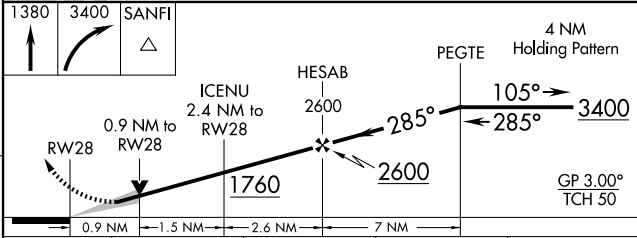
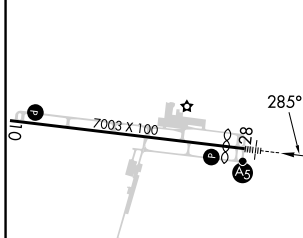
UNICOM
123.075 (CTAF) ①



Procedure NA for arrivals at JOTTA on V20 southwest bound and T201 northbound.



ELEV 968	D	TDZE 967
----------	----------	----------



CATEGORY	A	B	C	D
LPV DA		1167-3/4	200 (200-3/4)	
LNAV/VNAV DA		1218-3/4	251 (300-3/4)	
LNAV MDA		1300-3/4	333 (400-3/4)	
CIRCLING	1420-1	1540-1	1540-1 1/2	1560-2
	452 (500-1)	572 (600-1)	572 (600-1 1/2)	592 (600-2)

REIL Rwy 10 ①
 HIRL Rwy 10-28 ①

SE-2, 14 MAY 2026 to 11 JUN 2026

SE-2, 14 MAY 2026 to 11 JUN 2026