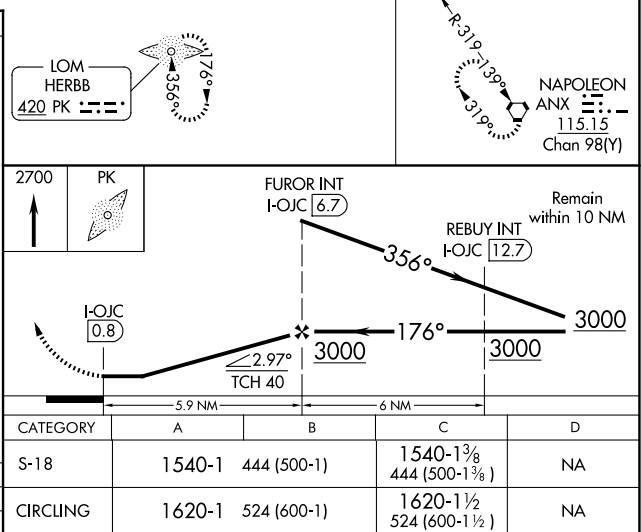
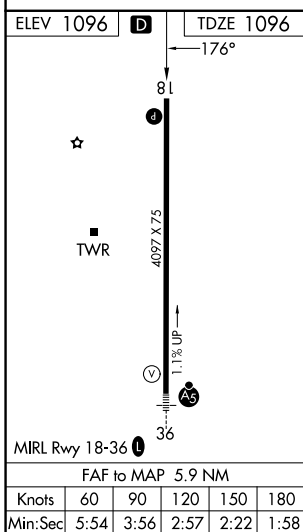
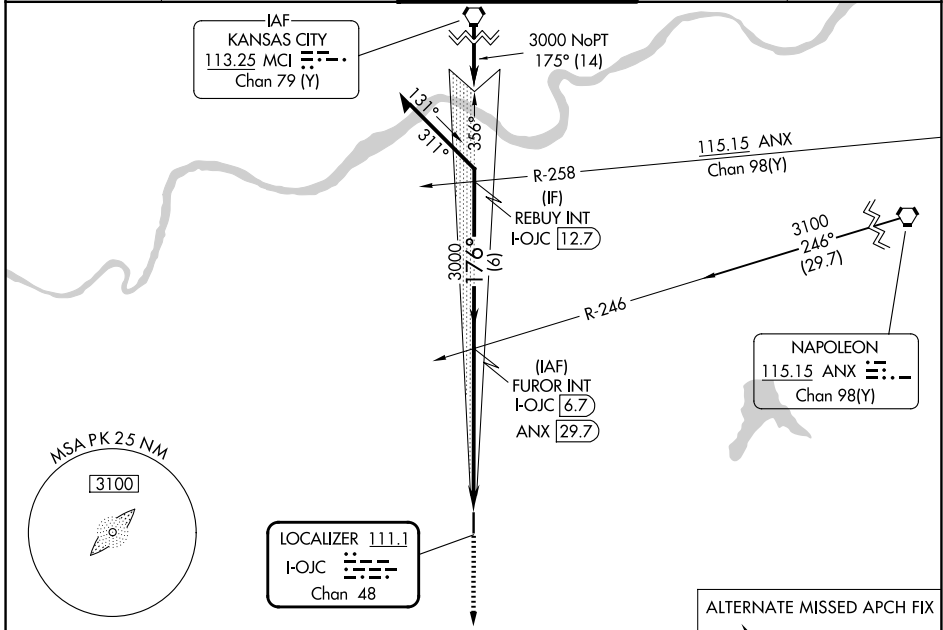


LOC/DME I-OJC <b>111.1</b> Chan <b>48</b>	APP CRS <b>176°</b>	Rwy Ldg TDZE Apt Elev	<b>4097</b> <b>1096</b> <b>1096</b>
---	------------------------	-----------------------------	---

**LOC RWY 18**  
JOHNSON COUNTY EXEC (OJC)

ADF required.		MISSED APPROACH: Climb to 2700 direct HERBB LOM and hold.		
▽ ▲ NA				

ATIS <b>119.35</b>	KANSAS CITY APP CON <b>118.9 251.075</b>	EXECUTIVE TOWER * <b>126.0 (CTAF) 225.4</b>	GND CON <b>121.6</b>	UNICOM <b>122.95</b>
-----------------------	---	--	-------------------------	-------------------------



NC-2, 14 MAY 2026 to 11 JUN 2026

NC-2, 14 MAY 2026 to 11 JUN 2026