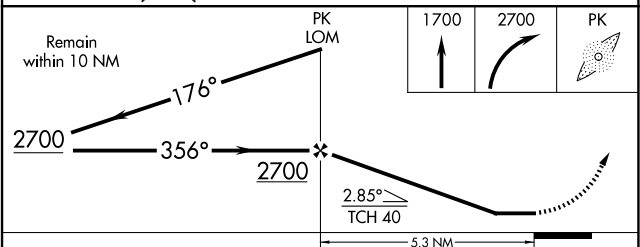
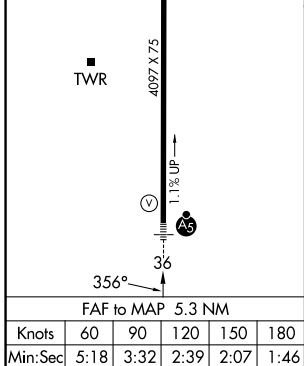
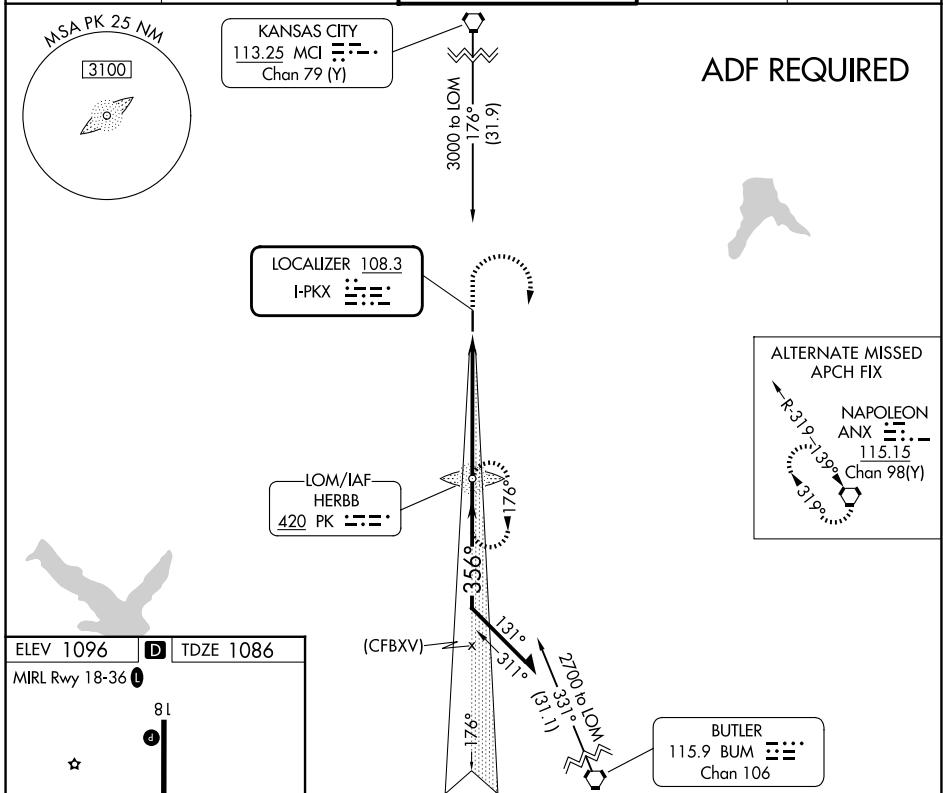


LOC I-PKX <b>108.3</b>	APP CRS <b>356°</b>	Rwy Ldg TDZE Apt Elev	<b>4097</b> <b>1086</b> <b>1096</b>
---------------------------	------------------------	-----------------------------	---

**LOC RWY 36**  
JOHNSON COUNTY EXEC (OJC)

<p>Helicopter visibility reduction below 3/4 SM not authorized. For inoperative MALSRS, increase S-36 Cats A and B visibility 1/4 mile.</p>	<p>MALSRS</p>	<p>MISSED APPROACH: Climb to 1700 then climbing right turn to 2700 direct HERBB LOM and hold.</p>	

ATIS <b>119.35</b>	KANSAS CITY APP CON <b>118.9 251.075</b>	EXECUTIVE TOWER* <b>126.0 (CTAF) 225.4</b>	GND CON <b>121.6</b>	UNICOM <b>122.95</b>
-----------------------	---	---	-------------------------	-------------------------



CATEGORY	A	B	C	D
S-36	1580-3/4	494 (500-3/4)	1580-1 494 (500-1)	NA
CIRCLING	1620-1	524 (600-1)	1620-1 1/2 524 (600-1 1/2)	NA

NC-2, 14 MAY 2026 to 11 JUN 2026

NC-2, 14 MAY 2026 to 11 JUN 2026