

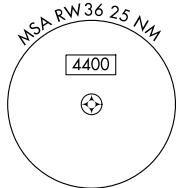
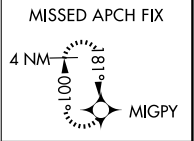
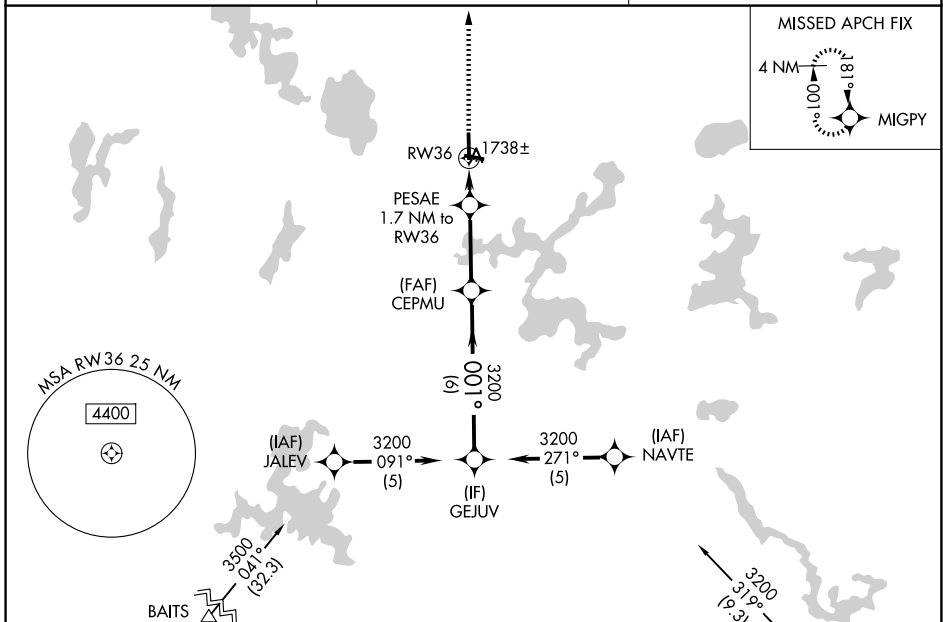
WAAS CH <b>49115</b> <b>W36A</b>	APP CRS <b>001°</b>	Rwy Ldg TDZE Apt Elev	<b>5150</b> <b>1627</b> <b>1630</b>
--	------------------------	-----------------------------	---

# RNAV (GPS) RWY 36

LAKELAND/NOBLE F LEE MEML FLD (A.R.V)

RNP APCH.	MALSR 	MISSED APPROACH: Climb to 3300 direct MIGPY and hold.
<p><b>⚠</b> Circling Rwy 10, 28 NA at night. Rwy 36 helicopter visibility reduction below 3/4 SM NA.  <b>⚠</b> Inop table does not apply. For uncompensated Baro-VNAV systems, LNAV/VNAV NA below -18°C or above 54°C.</p>		

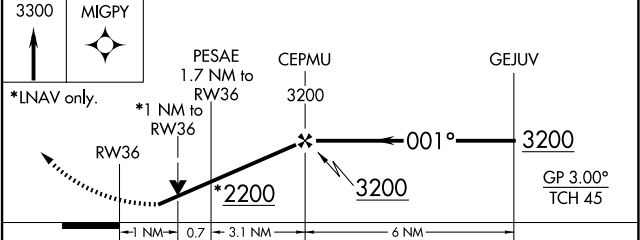
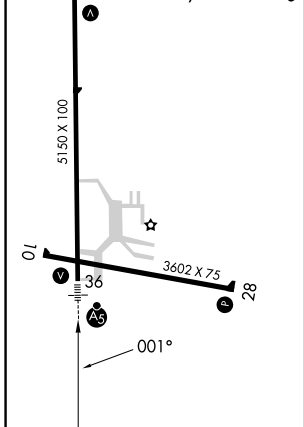
AWOS-3PT <b>121.125</b>	MINNEAPOLIS CENTER <b>133.65 281.5</b>	UNICOM <b>122.7 (CTAF)</b>
----------------------------	---	-------------------------------



Procedure NA for arrival on RHI VOR/DME airway radials 301 CW 021.



ELEV 1630	TDZE 1627
MIRL Rwy 10-28	<b>ⓘ</b>
HIRL Rwy 18-36	<b>ⓘ</b>
REIL Rws 18 and 28	<b>ⓘ</b>



CATEGORY	A	B	C	D
LPV DA		1948-1	321 (400-1)	
LNAV/VNAV DA		1999-1	372 (400-1)	
LNAV MDA		2000-1	373 (400-1)	
CIRCLING	2100-1 470 (500-1)	2200-1 570 (600-1)	2200-1½ 570 (600-1½)	2220-2 590 (600-2)

EC-3, 14 MAY 2026 to 11 JUN 2026

EC-3, 14 MAY 2026 to 11 JUN 2026