

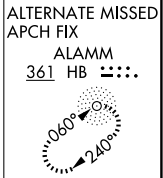
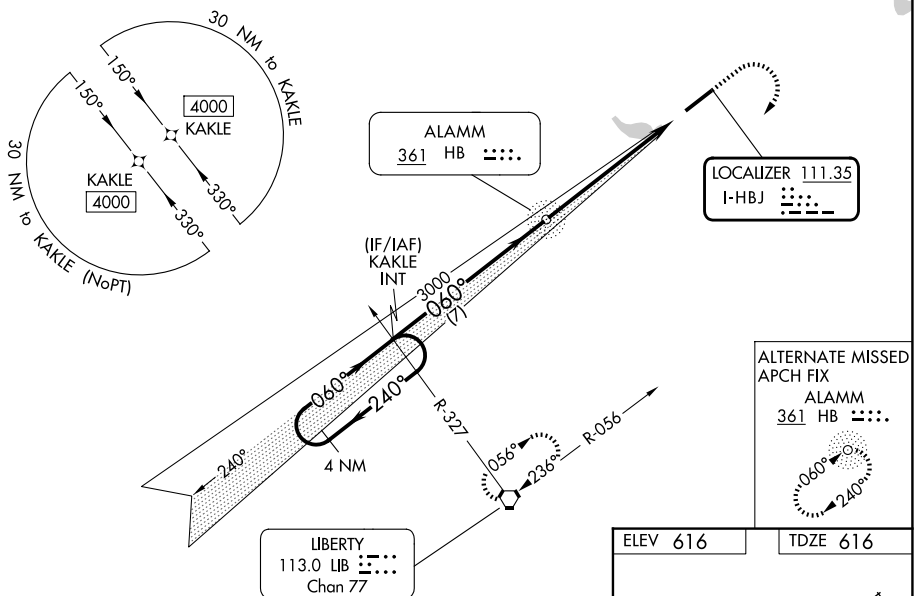
| | | | |
|---------------|-------------|----------|-------------|
| LOC I-HBJ | APP CRS | Rwy Ldg | 6406 |
| 111.35 | 060° | TDZE | 616 |
| | | Apt Elev | 616 |

ILS Y or LOC Y RWY 6

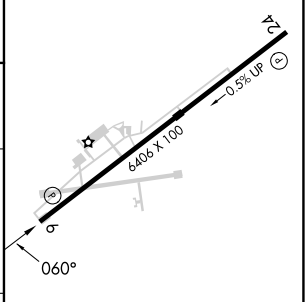
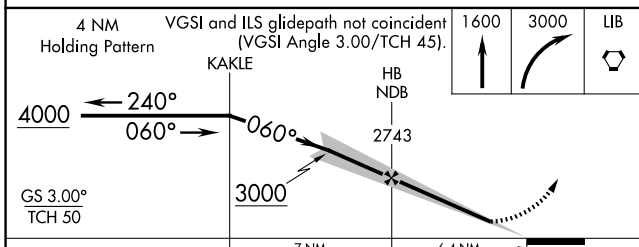
BURLINGTON/ALAMANCE RGNL (BUY)

| | | | |
|---|----------------------|---|-------------------------|
| <p>▼ When local altimeter setting not received, use Greensboro altimeter setting and increase all DA 97 feet and all MDA 100 feet and S-ILS 6 all Cats, S-LOC 6 Cat C/D, and Circling Cats C visibility ¼ mile. Helicopter visibility reduction below ¾ SM NA. ADF required.</p> | | <p>MISSED APPROACH: Climb to 1600 then climbing right turn to 3000 direct LIB VORTAC and hold.</p> | |
| ASOS | GREENSBORO APP CON | CLNC DEL | UNICOM |
| 135.325 | 126.6 327.075 | 120.25 | 122.975 (CTAF) 0 |

GPS or RADAR REQUIRED FOR TERMINAL ARRIVAL AREA



| | |
|----------|----------|
| ELEV 616 | TDZE 616 |
|----------|----------|



| CATEGORY | A | B | C | D |
|----------|--------------------|-------|--------------------------|------------------------|
| S-ILS 6 | | 866-¾ | 250 (300-¾) | |
| S-LOC 6 | 1160-1 544 (600-1) | | 1160-1½ | 544 (600-1½) |
| CIRCLING | 1160-1 544 (600-1) | | 1520-2¾ 904 (1000-2¾) | 1520-3 904 (1000-3) |

| | | | | | |
|-------------------|-------------------|------|------|------|------|
| HIRL Rwy 6-24 | REIL Rwy 6 and 24 | | | | |
| FAF to MAP 6.4 NM | | | | | |
| Knots | 60 | 90 | 120 | 150 | 180 |
| Min:Sec | 6:24 | 4:16 | 3:12 | 2:34 | 2:08 |

SE-2, 14 MAY 2026 to 11 JUN 2026

SE-2, 14 MAY 2026 to 11 JUN 2026