

WAAS CH <b>61019</b> <b>W02A</b>	APP CRS <b>026°</b>	Rwy Ldg TDZE Apt Elev	<b>4323</b> <b>926</b> <b>946</b>
--	------------------------	-----------------------------	---

# RNAV (GPS) RWY 2

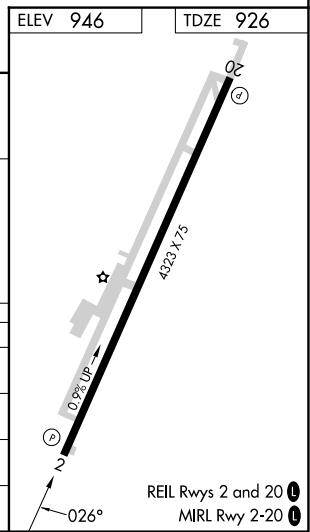
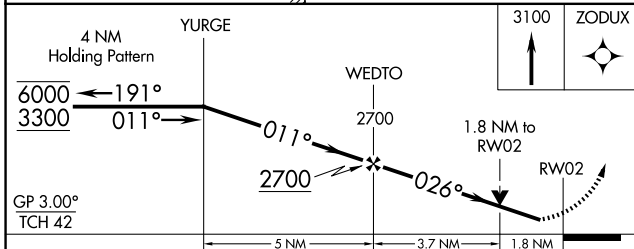
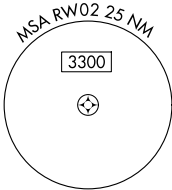
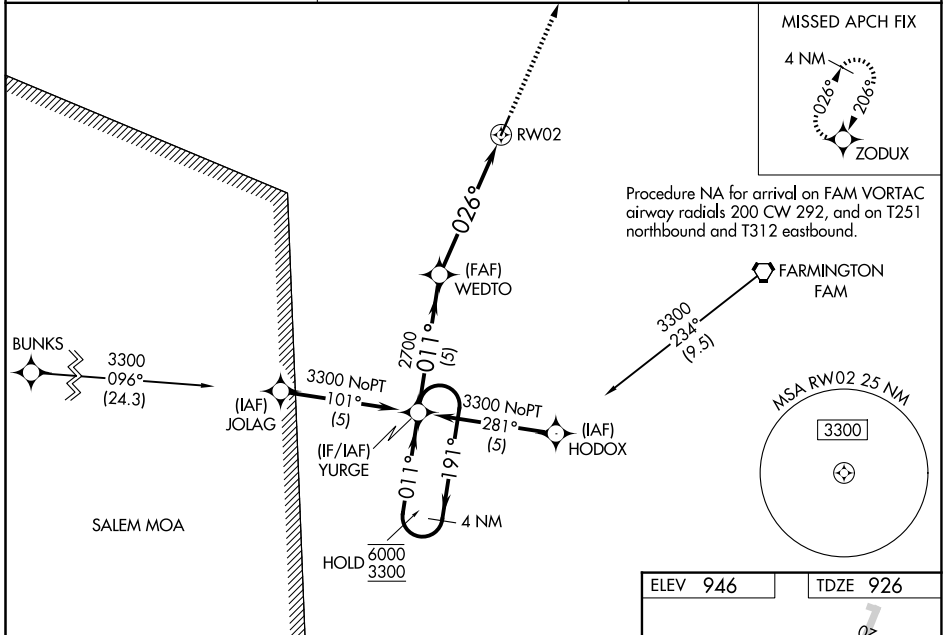
FARMINGTON RGNL (F.A.M)

RNP APCH - GPS.

**⚠** For uncompensated Baro-VNAV systems, LNAV/VNAV NA below -16°C or above 54°C. Rwy 2 helicopter visibility reduction below 3/4 SM NA. Circling Rwy 20 NA at night. Baro-VNAV and VDP NA when using Sparta altimeter setting. When local altimeter setting not received, use Sparta altimeter setting and increase LPV DA to 1330 feet and all visibilities 3/8 SM. Increase LNAV/VNAV DA to 1525 feet and all visibilities 3/8 SM. Increase all MDAs 160 feet and LNAV and Circling Cat B visibility 1/4 SM.

MISSED APPROACH: Climb to 3100 direct ZODUX and hold.

AWOS-3PT <b>119.275</b>	KANSAS CITY CENTER <b>127.475 346.275</b>	UNICOM <b>122.8 (CTAF) 0</b>
----------------------------	--	---------------------------------



CATEGORY	A	B	C	D
LPV DA	1176-1	250 (300-1)		NA
LNAV/VNAV DA	1371-1 3/8	445 (500-1 3/8)		NA
LNAV MDA	1540-1	614 (600-1)		NA
CIRCLING	1540-1	594 (600-1)		NA

NC-3, 14 MAY 2026 to 11 JUN 2026

NC-3, 14 MAY 2026 to 11 JUN 2026