

APP CRS	Rwy Ldg	4000
215°	TDZE	594
	Apf Elev	594

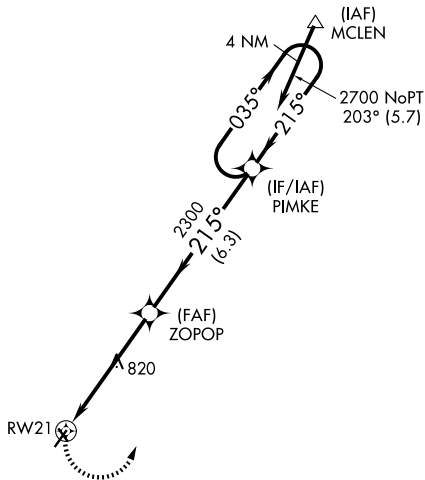
RNAV (GPS) RWY 21

LOGAN COUNTY (AAA)

RNP APCH.	MISSED APPROACH: Climbing left turn to 2700 direct PIMKE and hold.
<p>▼ If local altimeter setting not received, use Springfield, IL altimeter setting and increase all MDAs 60 feet. VDP NA with Springfield, IL altimeter setting. Rwy 21 helicopter visibility reduction below 3/4 SM NA.</p> <p>▲</p>	

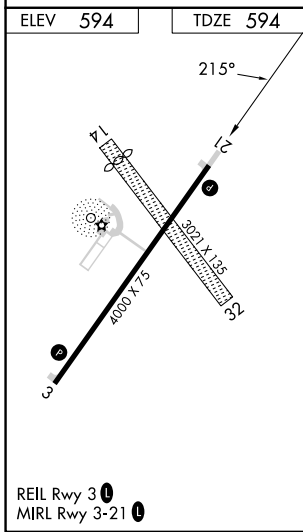
AWOS-3 118.775	SAINT LOUIS APP CON 126.15 323.0	UNICOM 122.8 (CTAF) 0
--------------------------	--	---------------------------------

Procedure NA for arrivals at MLEN on V9-69 northeast bound.



EC-3, 14 MAY 2026 to 11 JUN 2026

EC-3, 14 MAY 2026 to 11 JUN 2026



2700	PIMKE	VGSI and descent angles not coincident (VGSI Angle 3.00/TCH 25).	4 NM Holding Pattern	
CATEGORY	A	B	C	D
LNAV MDA	1080-1	486 (500-1)	1080-1 1/4 486 (500-1 1/4)	1080-1 1/2 486 (500-1 1/2)