

# RNAV (GPS) RWY 18

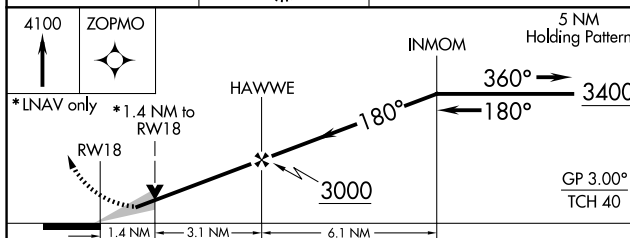
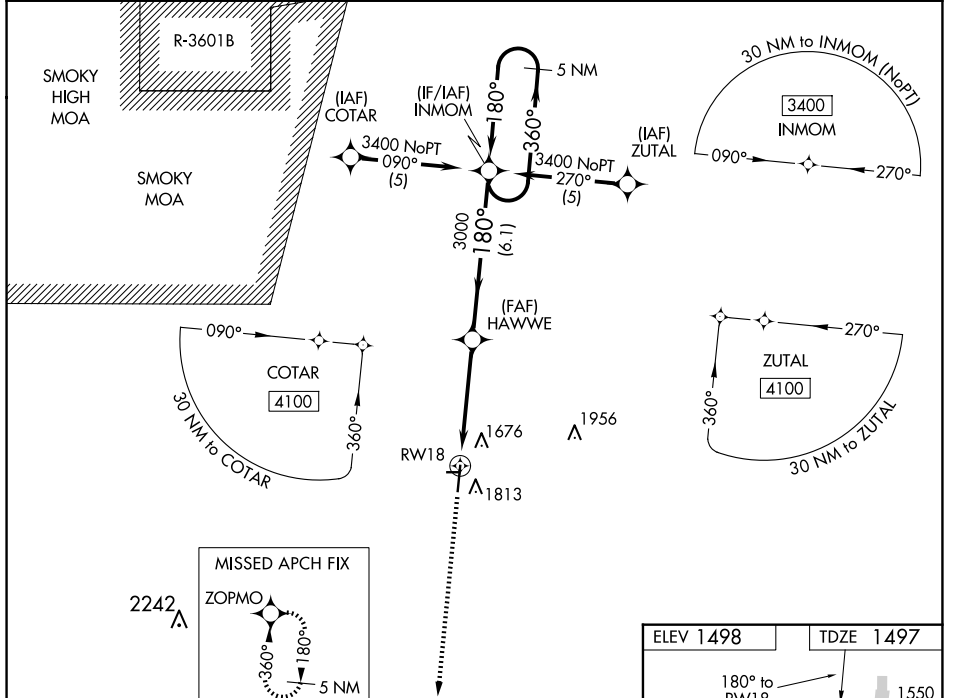
MC PHERSON (MPR)

WAAS CH <b>99505</b> <b>W18A</b>	APP CRS <b>180°</b>	Rwy Idg <b>5503</b> TDZE <b>1497</b> Apt Elev <b>1498</b>
--	------------------------	---

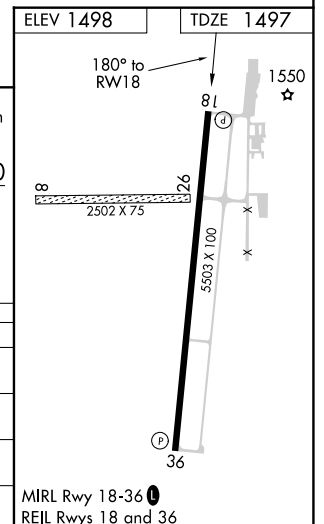
**▽** When local altimeter setting not received, use Salina altimeter setting: increase LPV DA to 1917 feet, LNAV/VNAV DA to 2120 feet and all visibilities  $\frac{3}{8}$  mile; increase all MDA 100 feet and visibility Cat C  $\frac{3}{8}$  mile. For uncompensated Baro-VNAV systems, LNAV/VNAV NA below -17°C (2°F) or above 54°C (130°F). Baro-VNAV and VDP NA when using Salina altimeter setting. DME/DME RNP-0.3 NA. Circling NA to Rwy 8 and 26.

**△ NA** MISSED APPROACH: Climb to 4100 direct ZOPMO and hold.

AWOS-3P <b>119.025</b>	WICHITA APP CON <b>125.5 306.2</b>	UNICOM <b>122.8 (CTAF) 0</b>
---------------------------	---------------------------------------	---------------------------------



CATEGORY	A	B	C	D
LPV DA	1826-1 $\frac{1}{8}$	329 (400-1 $\frac{1}{8}$ )		NA
LNAV/ VNAV DA	2029-1 $\frac{7}{8}$	532 (600-1 $\frac{7}{8}$ )		NA
LNAV MDA	1980-1	483 (500-1)	1980-1 $\frac{3}{8}$ 483 (500-1 $\frac{3}{8}$ )	NA
CIRCLING	2120-1	622 (700-1)	2120-1 $\frac{3}{4}$ 622 (700-1 $\frac{3}{4}$ )	NA



NC-2, 14 MAY 2026 to 11 JUN 2026

NC-2, 14 MAY 2026 to 11 JUN 2026