

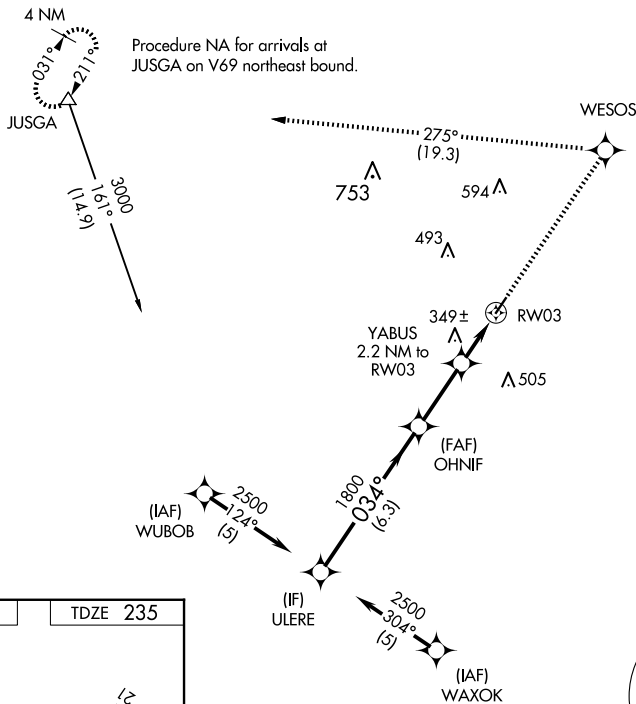
APP CRS <b>034°</b>	Rwy Idg <b>3829</b>
	TDZE <b>235</b>
	Apt Elev <b>235</b>

# RNAV (GPS) RWY 3

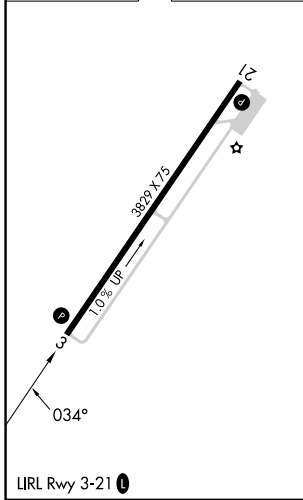
WARREN MUNI/JOHN B FRAZER JR FLD (3M9)

RNP APCH - GPS.	MISSED APPROACH: Climb to 3000 direct WESOS and on track 275° to JUSGA and hold.
▼ ▲ NA	Use Monticello altimeter setting. Procedure NA at night.

LLQ ASOS <b>133.325</b>	MEMPHIS CENTER <b>135.875 269.35</b>	CTAF <b>122.9 0</b>
----------------------------	---	------------------------



ELEV 235	TDZE 235
----------	----------



VGSIs and descent angles not coincident (VGSi Angle 3.00/TCH 40).			
ULERE	OHNIF	YABUS	RW03
2500	1800	920	
6.3 NM	2.7 NM	2.2 NM	
3000	WESOS	JUSGA	
↑	✧	tr 275°	△
2.98° TCH 45		2.2 NM to RW03	
CATEGORY	A	B	C
LNAV MDA	660-1	425 (500-1)	660-1¼ 425 (500-1¼)
			NA

SC-1, 14 MAY 2026 to 11 JUN 2026

SC-1, 14 MAY 2026 to 11 JUN 2026