

# GTLKE FIVE DEPARTURE (RNAV)

EC-2, 14 MAY 2026 to 11 JUN 2026

**TOP ALTITUDE:  
ASSIGNED BY ATC**

CLEVELAND DEP CON  
125.35 346.325  
ASOS  
118.925  
CLNC DEL  
125.7  
CIAF  
122.7

## DEPARTURE ROUTE DESCRIPTION

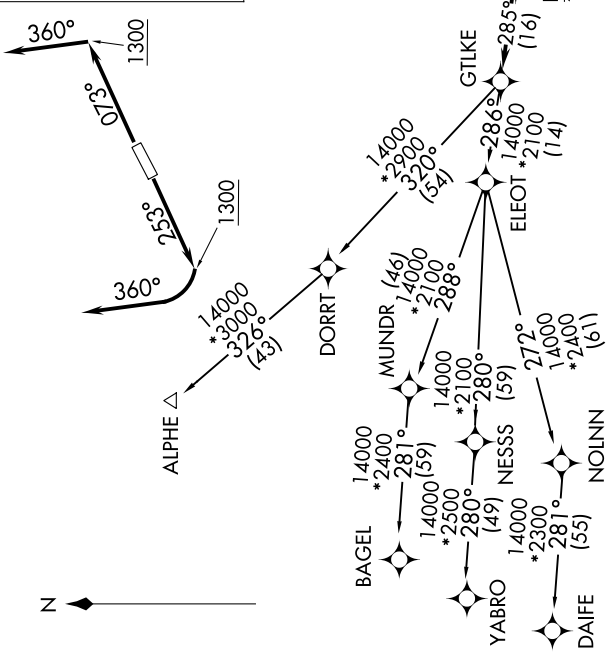
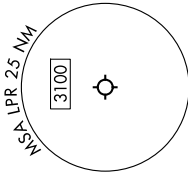
**TAKEOFF RUNWAY 7:** Climb on heading 073° to 1300, then on heading 360° or as assigned by ATC for RADAR vectors to cross AYYLE at or above 9000, thence.....

**TAKEOFF RUNWAY 25:** Climb on heading 253° to 1300, then right turn heading 360° or as assigned by ATC for RADAR vectors to cross AYYLE at or above 9000, thence.....

...on track 276° to cross BRNIN at or below 14000, then on track 285° to GTLKE then on (transition). Maintain ATC assigned altitude, expect filed altitude 10 minutes after departure.

ALPHE TRANSITION (GTLKE5.ALPHE)  
BAGEL TRANSITION (GTLKE5.BAGEL)  
DAIFE TRANSITION (GTLKE5.DAIFE)  
YABRO TRANSITION (GTLKE5.YABRO)

RNAV 1 - DME/DME/IRU or GPS.  
RADAR required.



## TAKEOFF MINIMUMS:

Rwys 7, 25: Standard with minimum climb of 500' per NM to 1300.

NOTE: Chart not to scale.

EC-2, 14 MAY 2026 to 11 JUN 2026