

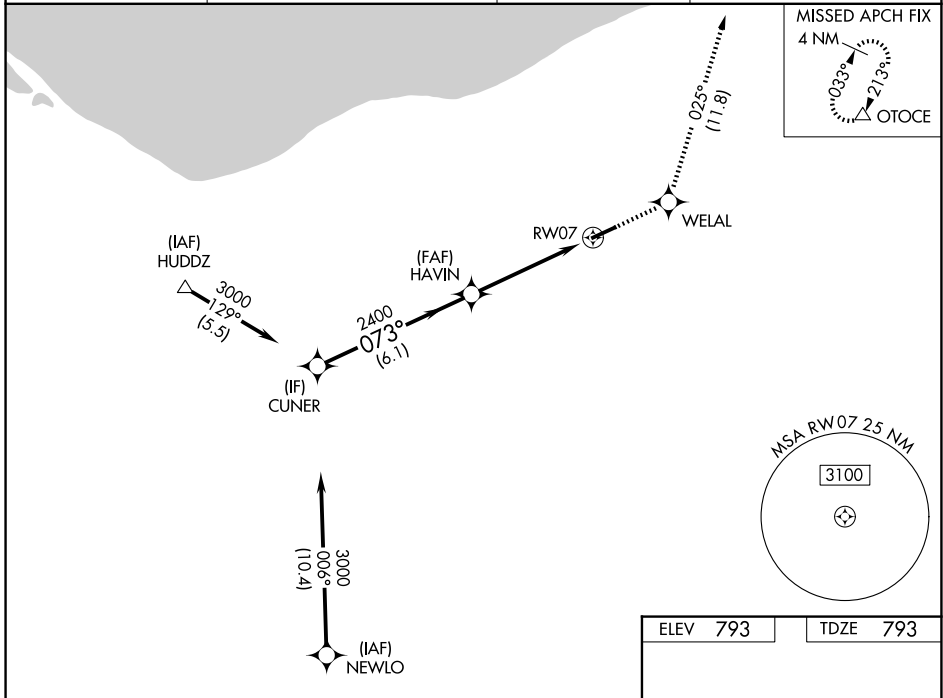
WAAS CH 99612 W07A	APP CRS 073°	Rwy Ldg TDZE 793 Apt Elev 793	5002
--	------------------------	---	-------------

RNAV (GPS) RWY 7

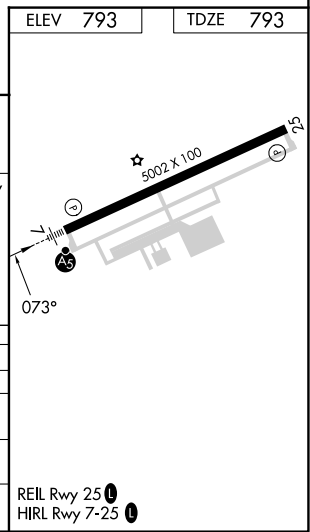
LORAIN COUNTY RGNL (L.P.R.)

RNP APCH. ▼ For uncompensated Baro-VNAV systems, LNAV/VNAV NA below -16°C (4°F) or above 54°C (130°F).		MALS R ▼	MISSED APPROACH: Climb to 3000 direct WELAL and on track 025° to OTOCE and hold.
---	--	-------------	--

ASOS 118.925	CLEVELAND APP CON 125.35 346.325	CLNC DEL 125.7	UNICOM 122.7 (CTAF) 0
------------------------	--	--------------------------	--



CUNER		HAVIN		RW07		WELAL		OTOCE	
3000		2400		2400		3000		tr 025°	
073°		073°		073°		073°		*	
GP 3.00°		TCH 54		*1.5 NM to RW07		5002 X 100		5002 X 100	
6.1 NM		3.3 NM		1.5 NM		073°		073°	
CATEGORY	A	B		C		D			
LPV DA		993-½		200 (200-½)					
LNAV/VNAV DA		1133-¾		340 (400-¾)					
LNAV MDA	1340-½	547 (600-½)		1340-1 ⅛		547 (600-1 ⅛)			
CIRCLING	1340-1 547 (600-1)	1360-1 567 (600-1)		1420-1 ¾ 627 (700-¾)		1420-2 627 (700-2)			



EC-2, 14 MAY 2026 to 11 JUN 2026

EC-2, 14 MAY 2026 to 11 JUN 2026