

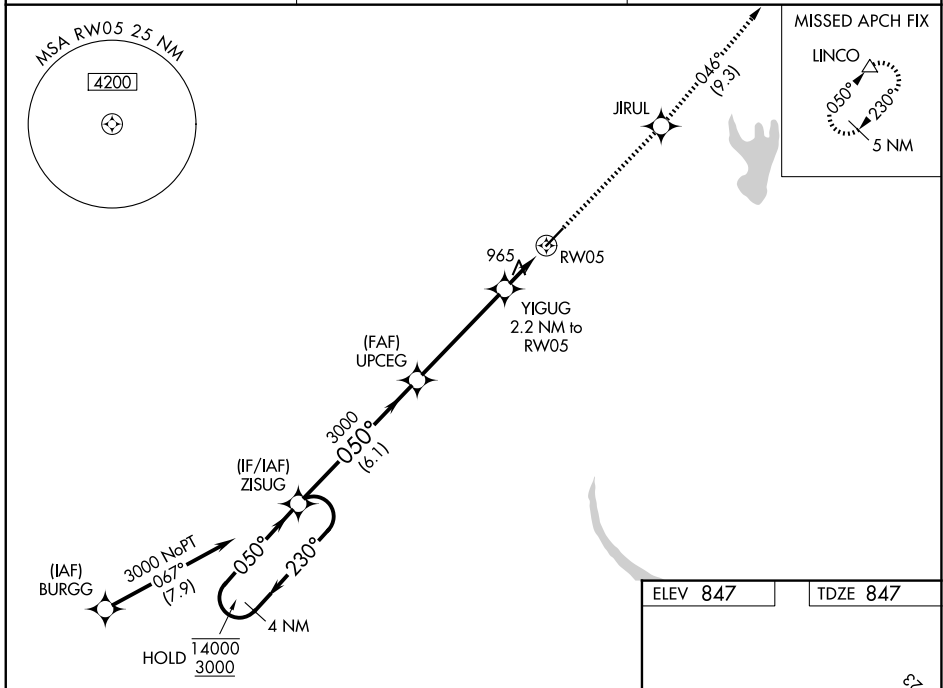
WAAS CH 63124 W05A	APP CRS 050°	Rwy Ldg TDZE Apt Elev	5001 847 847
--	------------------------	-----------------------------	---

RNAV (GPS) RWY 5

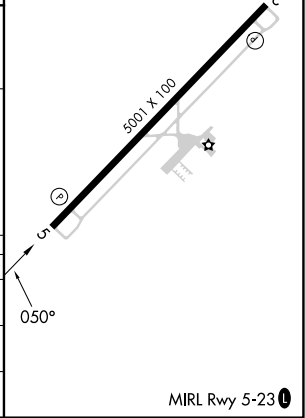
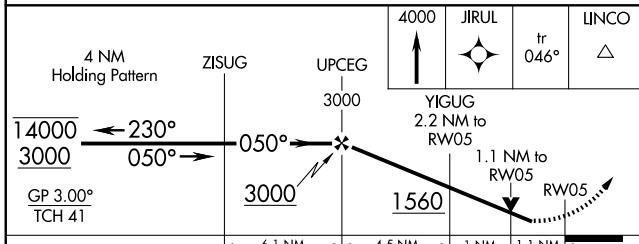
SHELBY-CLEVELAND COUNTY RGNL (EHO)

RNP APCH - GPS.	<p>▽ Rwy 5 helicopter visibility reduction below 3/4 SM NA. For uncompensated Baro-VNAV systems, LNAV/VNAV NA below -16°C or above 54°C. Baro-VNAV and VDP NA when using CLT altimeter setting. When local altimeter setting not received, use CLT altimeter setting and increase LPV DA to 1187 feet. Increase LNAV/VNAV DA to 1203 feet. Increase all MDAs 100 feet and LNAV visibility Cat C/D 1/4 SM.</p>	<p>MISSED APPROACH: Climb to 4000 direct JIRUL and on track 046° to LINCO and hold.</p>
-----------------	--	---

AWOS-3 118.425	CHARLOTTE APP CON 120.05 257.2	UNICOM 122.8 (CTAF) 0
--------------------------	--	---------------------------------



ELEV 847	TDZE 847
----------	----------



CATEGORY	A	B	C	D
LPV DA	1097-1		250 (300-1)	
LNAV/VNAV DA	1113-1		266 (300-1)	
LNAV MDA	1240-1 393 (400-1)		1240-1 393 (400-1 1/8)	

SE-2, 14 MAY 2026 to 11 JUN 2026

SE-2, 14 MAY 2026 to 11 JUN 2026