

APP CRS	Rwy Ldg	6000
235°	TDZE	681
	Apt Elev	681

RNAV (GPS) RWY 24

MAURY COUNTY RGNL (MRC)

RNP APCH - GPS.

⚠ Inp table does not apply to LNAV Cats C and D. VDP NA when using BNA altimeter setting. Circling NA to Rwy 17 and 35. When local altimeter setting not received, use BNA altimeter setting and increase all MDAs 120 feet and LNAV visibility Cat C/D $\frac{3}{8}$ SM, and Circling visibility Cat C $\frac{1}{2}$ SM.

ODALS

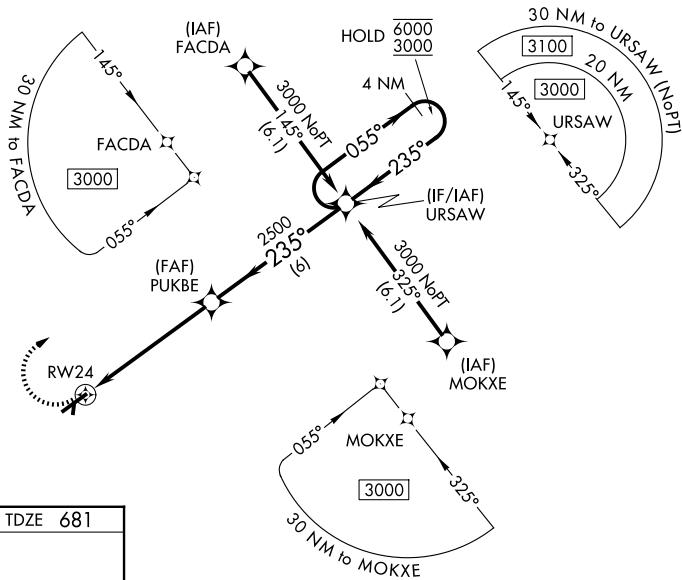


MISSED APPROACH: Climbing right turn to 3000 direct URSAW and hold.

AWOS-3
128.625

MEMPHIS CENTER
125.85 379.25

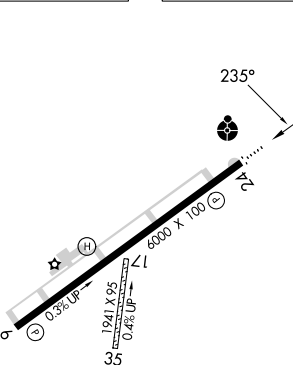
UNICOM
122.8 (CTAF) ①



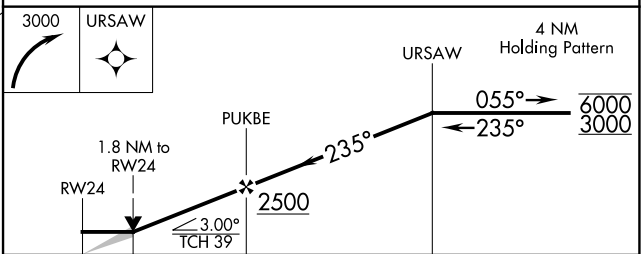
SE-1, 14 MAY 2026 to 11 JUN 2026

SE-1, 14 MAY 2026 to 11 JUN 2026

ELEV 681 **D** TDZE 681



MIRL Rwy 6-24
REIL Rwy 6
REIL Rwy 24 ①



CATEGORY	A	B	C	D
LNAV MDA	1300- $\frac{3}{4}$	619 (700- $\frac{3}{4}$)	1300- $\frac{15}{8}$	619 (700- $\frac{15}{8}$)
CIRCLING	1320-1 639 (700-1)	1360-1 679 (700-1)	1400-2 719 (800-2)	1620-3 939 (1000-3)