

APP CRS	Rwy Ldg	<b>6000</b>
<b>055°</b>	TDZE	<b>671</b>
	Apt Elev	<b>681</b>

# RNAV (GPS) RWY 6

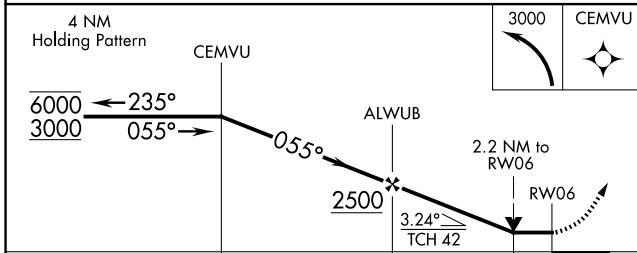
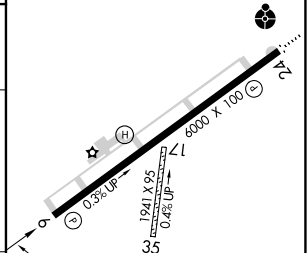
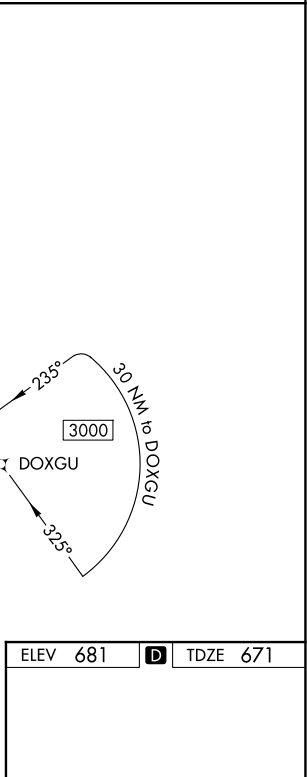
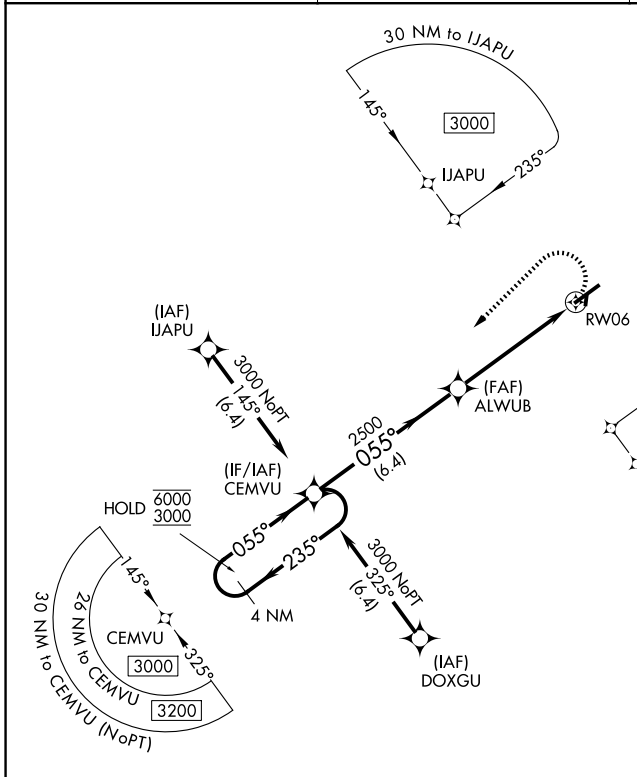
MAURY COUNTY RGNL (MRC)

RNP APCH - GPS.

**▼** Rwy 6 helicopter visibility reduction below 3/4 SM NA. Circling NA to Rwy 17 and 35. VDP NA when using BNA altimeter setting. When local altimeter setting not received, use BNA altimeter setting and increase all MDAs 120 feet and LNAV visibility Cat A 1/4 SM, and Circling visibility Cats A/C 1/4 SM.

**▲** MISSED APPROACH: Climbing left turn to 3000 direct CEMVU and hold.

AWOS-3 <b>128.625</b>	MEMPHIS CENTER <b>125.85 379.25</b>	UNICOM <b>122.8 (CTAF) 0</b>
--------------------------	--	---------------------------------



CATEGORY	A	B	C	D
LNAV MDA	1460-1 789 (800-1)	1460-1 1/4 789 (800-1 1/4)	1460-2 1/2	789 (800-2 1/2)
CIRCLING	1460-1 779 (800-1)	1460-1 1/4 779 (800-1 1/4)	1460-2 1/2 779 (800-2 1/2)	1620-3 939 (1000-3)

ELEV 681 **D** TDZE 671

MIRL Rwy 6-24  
REIL Rwy 6  
REIL Rwy 24 **0**

SE-1, 14 MAY 2026 to 11 JUN 2026

SE-1, 14 MAY 2026 to 11 JUN 2026